

Serving the University



Antony E. Champ, Ph.D.

In honor of the faculty mentor who guided him toward his doctorate in chemistry 45 years ago, University Trustee Antony E. Champ, Ph.D., (GRS '63) has endowed a graduate fellowship fund at the College of Arts and Sciences. The fund will be named for J. Reid Shelton, a leading researcher in rubber chemistry, who spent his entire career at Case Western

Reserve University and its predecessor institutions.

“He was a lovely man to work with, a really delightful person,” Champ says. “Dr. Shelton also let you find your own way. He was always there for guidance, but he allowed you to take your thesis work wherever you wanted it to go—within bounds.”

Tony and his wife, Edith, recently hosted the Washington/Baltimore alumni chapter for a wine tasting and tour at his business, White Hall Vineyards.

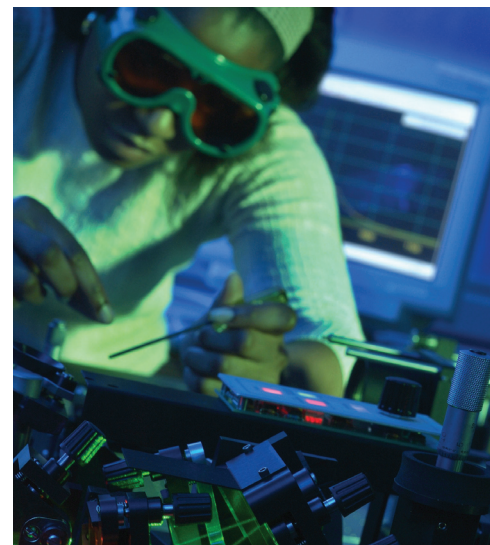


Susie Gharib + Mary Ann Jorgenson

Two university trustees, Susie Gharib (FSM '72), left, and Mary Ann Jorgenson (LAW '75), are helping lead “Bridge to the Future: The Challenge for the Flora Stone Mather Center for Women.” This \$1 million matching challenge campaign

from the Flora Stone Mather Alumnae Association will benefit the Center for Women.

Gharib, anchor and senior strategic advisor of PBS’s *Nightly Business Report*, is the campaign national chairwoman. Jorgenson, a senior partner with Squire, Sanders & Dempsey L.L.P., is campaign regional chairwoman.



\$2 Million Gift Advances Translational Research

Case Western Reserve University has received an anonymous \$2 million gift to endow the program directorship of the Coulter-Case Translational Research Partnership in the Department of Biomedical Engineering, a joint department of the Case School of Engineering and the School of Medicine.

Case Western Reserve is one of only nine schools in the United States selected to participate in the Translational Research Partnerships in Biomedical Engineering, sponsored by the Wallace H. Coulter Foundation.

“Private commitments to the Coulter-Case Partnership are vitally important to its continued work in advancing interdisciplinary research,” says Norman C. Tien, dean and Nord Professor of Engineering at the Case School of Engineering. “By promoting, developing, and supporting translational research through these collaborative projects, we can accelerate the process of moving promising technologies to clinical application.”