

# First Year Student Newsletter

Volume 8.6

April/May 2004

Produced by  
Julie L. Amon, Assistant Dean for First Year Students  
and the Office of Undergraduate Studies

## Reflection - Your First Year Experience

---

### Greetings from the Dean

---

I can't believe that we are only a few short weeks away from the end of the spring semester and the end of your first year. For me the year has absolutely flown by! I have TRULY enjoyed getting to know you and seeing your many wonderful accomplishments. I am drawn back to the advice that I gave you during orientation: E<sup>4</sup> - Explore, Enrich, Engage, and Enjoy. I have seen many of you come to embody this principle. I hope you continue to reflect on these values as you continue your time here at Case. I hope that you will continue to seek out opportunities for engagement and learning; build relationships with your peers, faculty and staff; and find ways to affect positive change on you, your school and your community. In short, get the most out of your education and then leave Case a better place than you found it. I am very proud of you and look forward to seeing you in the years to come. Study hard for finals, have a wonderful summer and keep in touch!

---

### Advising and Registration for Summer and Fall 2004 Classes

---

**Academic advising started on March 29<sup>th</sup>.** Those of you who declared your major should have contacted your new departmental faculty advisor to set up an advising appointment. If you are not ready to declare a major at this point, you will continue to work with your first year advisor to prepare for summer and fall advising. Students are not permitted to register for courses until they meet with their advisor. If you have not scheduled an appointment with your adviser, do so NOW! **All undergraduates may start to register for Summer 2004 classes on April 19<sup>th</sup>. First-year students (regardless of credit hours earned) are able to register for Fall 2004 classes on April 20<sup>th</sup>.** The Schedule of Classes for both Summer and Fall 2004 is available on-line at <http://www.cwru.edu/courses/catalog/>.

---

### Declaring a Major

---

*Have you declared your major yet?* I know that many of you are still considering your academic options and if you are in that situation, you need not declare at this point. However, it appears as if many of you are pretty sure about a major and have simply not yet completed the major Declaration process. If this describes you, I urge to come in and pick up the declaration form.

*Advantages to declaring your major:*

- ❖ Get connected to faculty in your academic department
- ❖ Meet other students in your major
- ❖ Learn about research, internships and scholarships in your academic area of interest

*How do I continue to explore my academic interests?*

- ❖ Talk to the faculty representative in the department - faculty representatives are listed in your *Handbook*
- ❖ Make an appointment with a counselor at the Career Center, 2<sup>nd</sup> Floor Sears Bldg, 368-4446
- ❖ Use the Career Center Website <http://www.cwru.edu/stuaff/careers/> to explore your interests

If you are ready to declare, carefully review the procedures listed.

1. Obtain a Declaration of Major Form in the Office of Undergraduate Studies, Sears 357 (also available in the 24- Hour Study Room in Wade), and take the form to the department representative in your intended major for his/her signature and assignment of a major adviser. A list of representatives is in your *2003 - 2004 Handbook for Undergraduates*, and is posted outside Sears 357.
2. All students must also select which General Education/Core Requirements they are following. **SAGES Participants:** Make sure that you *additionally* check that you are a SAGES participant.
3. Bring the completed form to the Office of Undergraduate Studies, Sears 357. *The declaration of major is not official unless it is submitted to the Office of Undergraduate Studies.*

**Course Withdrawal - LAST DAY - April 26<sup>th</sup>!!**

*(2003-2004 Handbook for Undergraduate Students, p. 68)*

As a first year student, you may withdraw from a course(s) up until the last day of classes - - this spring, that is **Monday, April 26, 2004**. In order to withdraw from a class, you must complete a Drop/Add Form (available in Sears 357, 24-Hour Study Room in Wade, or Yost 110) and get the signature of your advisor. Once that is complete, come to the Office of Undergraduate Studies in Sears 357 for a Dean's signature. After you secure a Dean's signature, you must take the form to the Registrar's Office in Yost 110 for processing. Before you seek approval for withdrawal, please consider the following issues:

- ❖ Have you talked with your professor about your progress/success in the course?
- ❖ Have you taken advantage of support resources: professor office hours, TUBA and on-going tutoring, SI's, etc.?
- ❖ Have you thought about how this withdrawal will impact your academic standing and plans for next semester?

**Pass/No Pass Option**

*(2003 - 2004 Handbook for Undergraduate Students, pp. 69-70)*

If you are a full-time student in good academic standing, you have the option of electing to have one course graded on a Pass/No Pass basis. In order to do this, the course must NOT:

- ❖ Be a course required for your General Education/Core Requirements including Humanities and Social Science Sequences
- ❖ Be a course required for an intended major or minor

i.e. The Pass/No Pass option only may be used for Open Electives.

**The Pass/No Pass option may be exercised by filing a petition in the Office of Undergraduate Studies, Sears 357 during the last three days of classes - April 22, 23, and 26, 2004.** Instructors are not notified of a student's use of this option. They are required to submit evaluative grades for all students and these are submitted to Pass/No Pass in the Registrar's Office. Grades of P earn credit but are not calculated into the cumulative GPA. Grades of NP do not earn credit and are not calculated into the cumulative GPA.

**Incompletes**

*(2003 - 2004 Handbook for Undergraduate Students, p. 69)*

An Incomplete (I) can only be assigned by the professor if there has been a previous conversation with the student outlining extenuating circumstances, explained before the assignment of the grade, which clearly justifies an extension of time beyond the requirements established for and met by other students in the class. Additionally, an Incomplete can only be assigned if the student is passing the course and only one small segment of the course remains to be completed. An Incomplete cannot be assigned because a student is absent from a final exam unless the Dean of Undergraduate Studies has authorized the absence in advance.



**Spring Final Exam Schedule**

*(2003-2004 Handbook for Undergraduate Students, p. 67)*

Make sure to check your final exam schedule NOW! Final exams will not be rescheduled to accommodate travel plans, so make sure that you confirm your exam dates ASAP. Also, if you have three exams scheduled on the same day, you may ask that one be rescheduled. Please contact Ms. Heidi Bocan in the Office of Undergraduate Studies, Sears 357, 368-2928, to discuss this issue. You can view the final exam schedule on-line at

<http://www.cwru.edu/provost/registrar/exams/exam042.html>

4/26	Last Day of Classes
4/27 - 4/28	Reading Days
4/29 - 5/6	Final Exam Period

**Overloads**

*(2003 - 2004 Handbook for Undergraduate Students, p. 67)*

The normal full-time load is 14-18 semester hours. Continuing students may carry 19-21 hours if they have a cumulative average of 3.20 or better. To register for 22 or 23 hours a minimum average of 3.50 is required. Any schedule of more than 18 hours requires dean's approval. Graduating seniors will be approved for overloads if they need such a schedule in order to graduate at the end of the semester in question.

**ENGL 150**

Remember, the English Composition Requirement - ENGL 150 - **must be completed by the end of the first year with a grade of C or higher.\*** For those of you who did not yet take this course, ENGL 150 **MUST** be included in your Fall 2004 schedule.

\* Students participating in the SAGES program will complete this requirement through the completion of their four seminars and their writing portfolio.

**Physical Education in the Fall Semester**

All first year students should plan on registering for Physical Education Activity course(s) in the fall semester (unless you have already completed your PHED requirement). You may include one or two ½ semester courses, a full semester course, or a Varsity Sport. Varsity athletes - don't forget to register for your sport!!




---

**REMINDER - Off-Campus Study Request Form  
Due April 15<sup>th</sup>**

---

*(2003-2004 Handbook for Undergraduate Students, pp. 61-62)*

Those of you planning to take courses this summer at another university or college need to make sure that you complete and return the **Off-Campus Study Request Form no later than April 15<sup>th</sup>**. This form is available both in Sears 357 and the 24-Hour Study Room in Wade. Make sure that you read the criteria for taking summer work in your *2003 - 2004 Handbook for Undergraduate Students* as well as on the back of the Off-Campus Study Request Form. Your form will not be processed without required course descriptions and necessary signatures.

For those of you who live in Cuyahoga County, please pay special attention to the specific residency restrictions listed in the *Handbook*.

Don't forget that Case also offers summer courses and the tuition is  $\frac{1}{2}$  price for these courses. You can check out our offering in the Schedule of Classes at <http://www.cwru.edu/courses/catalog/>.

---

**Have You Checked Your DPR Lately?**

---

At this point more than half of you have declared your major(s). So now, I encourage you to review your DPR to see how your courses and AP, IB and transfer credit is being applied toward degree requirements. You should refer to your DPR on a regular basis and you should print it and take it with you to your advising appointments. Once again, if you do not see AP, IB or transfer credit listed on your DPR that you feel you should have earned, please contact me so I can look into this for you. You can access your DPR through the following website: <http://www.cwru.edu/provost/ugstudies/DPR.htm>.

---

**Maintaining Good Academic Standing**

---

*(2003 - 2004 Handbook for Undergraduate Students, p. 71)*

Academic standing comprises two elements: credit hours earned and cumulative GPA. To maintain good academic standing at the end of the second semester, a first year student must earn at least 21 credit hours at Case with a 1.75 cumulative GPA. A student who does not meet these minimum requirements will be placed on academic probation.

---

**Looking for a Scholarship?**

---

If you did not receive a Trustee's, President's or Provost's Scholarship upon matriculation in the fall, you are eligible to apply for a very limited number of these scholarships for the next academic year. In order to apply, you must meet the following criteria:

- ❖ A US Citizen or Permanent Resident
- ❖ A first, second or third year student in 2003-2004 who has not previously received a Trustee's, President's or Provost's Scholarship
- ❖ A cumulative GPA of at least 3.75 and at least 30 credit hours earned at Case in the 2003-2004 academic year. (Advanced Placement and transfer credit hours *will not* be considered as part of the 30 hours earned.)

*Applications are available in the Office of Undergraduate Studies in Sears 357 and in the 24-Hour Study Room in Wade and must be returned to the office in Sears 357 no later than April 30, 2004.*

---

**Scholarship Retention**

---

*(2003 - 2004 Handbook for Undergraduate Students, p. 72)*

At the end of each academic year (June), the records of all scholarship recipients will be reviewed. To have a scholarship renewed for the following academic year, a recipient is expected to satisfy two requirements: a minimum number of hours earned after enrolling at Case and a minimum cumulative GPA. In order to retain your Trustee's, President's or Provost's Scholarship you must have earned at least 21 hours with a cumulative scholarship GPA\* of 1.75.

**Appeal Process**

In exceptional circumstances, the Committee on Academic Standing will continue a scholarship for a student whose achievement or whose attendance does not meet the standards outlined above. It is the student's responsibility to write to the Committee on Academic Standing, c/o the Office of Undergraduate Studies, **before June 1**, to inform the committee of any special circumstances which may have affected performance and/or attendance during the preceding academic year, and to request special consideration for continuation of a scholarship.

\* The Scholarship GPA includes all courses posted for grades including F grades earned through the First Year Student Grading Policy and both grades earned through the use of the Repeat Option. Therefore, the statement, 'I'll just take an F because freshman forgiveness saves me,' represents a very ill-advised strategy. If you are facing a possible D or F in a course, it makes more sense to withdraw than it does to risk the impact on your GPA and the possible loss of your scholarship.




---



---

### Undergraduate Honors Assembly - April 26<sup>th</sup>

---



---

On Monday, April 26, 2004 at 3:30 pm, the University takes time to recognize its best and brightest undergraduates. Come join your friends and colleagues and show your support for your first, second and third classmates who have achieved distinction in academics, leadership and service. The Undergraduate Honors Assembly will be held in Amasa Stone Chapel. Refreshments will be served immediately after the Assembly in the Tomlinson Gallery.

---



---

### Meet the Assistant Dean for Second Year Students Joseph Pieri

---



---

Hopefully, my name and role are familiar to you. I hope your first year here at Case has proven to be an enjoyable experience both inside and outside of the classroom. My role as Assistant Dean of Undergraduate Studies entails primarily working with second year students. I am looking forward to working with you next year. Dean Amon has told me many wonderful things about the class of 2007! I am especially looking forward to collaborating with you and other members of the Case community to enhance your second year academic experience. It is important that we establish an open line of frequent and consistent communication. One form of communication will be monthly newsletters that I will send out.

#### *Who Am I?*

I am a graduate of Northeastern University (Boston, MA) where I earned a BS in psychology, an MS in applied educational psychology, and a certificate of advanced graduate study in school psychology. Before coming to Case (and Cleveland) four years ago, I gained experience in a variety of university offices at Northeastern University and Boston University, including cooperative education, national testing, and disabilities services. I was also a school psychologist for three years. Before joining the Office of Undergraduate Studies last year, I served as the Assistant Director of Educational Support Services for three years.

Although I lived in Boston for 10 years, I am originally from Buffalo, New York. (If you are from Buffalo, by all means drop me a line and let me know...I graduated from St. Joseph's Collegiate Institute). My wife (who is from Buffalo and earned an MBA from Weatherhead) and I live in Cleveland Heights. In February we welcomed our first child, a baby girl, into our lives. In my ever-diminishing spare time I enjoy long distance running, cooking and foreign/independent films.

Finally, if you're curious as to what I look like...check me out on the Undergraduate Studies website at <http://www.cwru.edu/provost/ugstudies/undstud.htm>.

---



---

### Second Year Institute Summer 2004

---

*The Second Year Institute at Case Western Reserve  
University  
Redefining Leadership and Academics at Case Western  
Reserve University*

*August 16-17, 2004*

Second year students at Case are invited to participate in this innovative and highly energetic program that will welcome students back to campus, help them get better acquainted with academic departments and centers, provide essential information about the upcoming year, build interpersonal and leadership skills, and build a greater sense of community.

Application information will be sent and posted in the near future. Be sure to make arrangements to participate in this terrific opportunity!

---



---

### Communication Studies Major, Minor and Sequence

---



---

Many of you have already learned that a decision has been made to discontinue the Communications Studies track within the Communication Sciences Department. The Communication Disorders track will remain. Dr. Stephen Haynesworth, Associate Dean for College of Arts and Sciences and Acting Chair of Communication Sciences prepared a letter to students in the Communication Studies and I think that his letter clearly explains the strategy being adopted to adapt to this curricular restructuring. Here is an excerpt from his letter dated April 2, 2004.

"The Communication Studies faculty, in consultation with the Office of Undergraduate Studies and the Office of the Registrar, have constructed a plan that we believe will allow any student currently enrolled at Case who intends to major or minor in communication sciences through the communication studies track, to do so." (*The plan and sample schedules can be obtained from the Communication Sciences Department or the Office of Undergraduate Studies.*)

"One very important component of the plan is that students planning to major or minor along the communication studies track, need to develop a scheduling plan to complete the communication studies courses required of the major or minor by the end of the 2005-2006 academic year. In past years, the majority of students majoring or minoring in communication studies have required only two years (four semesters) to complete their departmental course requirements."

"To insure that you will be able to complete your communication studies courses by the end of the 2005-2006 school year, we ask that you meet with your COSI adviser, as soon as possible, and develop a course schedule that identifies when communication studies courses will be taken over the next two years, and when General Education Requirements will be taken to graduate. Please complete the [aforementioned] documents with the assistance of your COSI adviser and leave a copy of the completed plan with your adviser. Your adviser will communicate any difficulties or obstacles to the successful completion of the plan to me so that solutions can be developed."




---

**Wittke & Jackson Award Nominees**

---

Thanks to all of you who took the time to nominate faculty and staff for teaching and mentoring excellence awards. Case's commitment to first year student is evident in the many first year advisors and teachers of first year students nominated this year. Please take some time to offer your congratulations to the nominees that you know.

☞ *Carl F. Wittke Award for Excellence in Undergraduate Teaching*

Gerd Bayer	Yoshiko Kishi
Eric Bettinger	Emery Lee
Robert Brown	Yuxiu Liang
Clemens Burda	Marshall Lietman
Chris Butler	Kenneth Loparo
Christine Cano	Victoria Lovegren
Melissa Cardon	Francis Merat
Tsz Ho Chan	Chris Mihos
Hillel Chiel	Gary Murphy
John Ciofalo	Ignacio Ocasio
Heath Demaree	Meral Ozsoyoglu
Thomas Ellis	F. Joseph Routman
Asim Erdilek	Adel Saada
Scott Fine	Jonathan Sadowsky
Dario Gasparino	Jerrold Scott
Brian Gran	David Singer
Warren Grill	Laura Tartakoff
Peter Haas	Christine Valdon
Fabienne Haymore	Edward White
Laura Hengehold	Wojbor Woyczynski
Susan Hinze	Eric Youngstrom
Gwen Hullman	

☞ *J. Bruce Jackson, M.D. Award for Excellence in Undergraduate Mentoring*

Elizabeth Banks	Emilia McGucken
Hope Barkoukis	Caseal Jordan Medley
Gerd Bayer	Heather Morrison
Eric Bettinger	Ignacio Ocasio
Jane Buder Shapiro	Judith Oster
Chris Butler	Joseph Pieri
Robyn Dermody	Elizabeth Salemi
Tim Dodd	Tim Shuckerow
Steven Eppell	David Singer
Scott Fine	Mano Singham
Nick Frollini	Mary Step
Joseph White	Laura Tartakoff
Victoria Lovegren	Mary Rose Tichar
Ica Manas-Zloczower	Thrity Umrigar

---

**Summer Employment Opportunity - Office of Admissions**

---

The Office of Admissions is looking for students to serve as tour guides for two summer Open House programs. Students need not be current tour guides. Students with out tour guide experience will be trained and will receive compensation for that training time. Training involves shadowing approximately 3 tours and giving a 4th with an experienced guide. Tours last approximately 90 minutes. Training dates and times are flexible and training time is also paid.

**Dates:** *Friday, June 18<sup>th</sup> and Friday, August 6<sup>th</sup>*

**Times:** *9:30 a.m. - 5:30 p.m. (Students not available for the entire time are still encouraged to apply.)*

**Tour Length:** *Approximately 90 minutes*

**Salary:** *\$10.50/hour*

If you are interested, please contact Christine DeSalvo at [christine.desalvo@case.edu](mailto:christine.desalvo@case.edu).

---

**Congratulations to First Year Student Leaders**

---

**Learning Assistants**

- Yevgenia Baron
- Kristen Poinar
- Jennifer Kotzin
- Matt Wholey

**Class of 2007 Officers**

- Elyse Moretti - President
- Colin Maly - Vice President
- Christine Chambers - Secretary
- Peter Chung - Treasurer

**USG Representatives**

- Amelia Andrews - Vice President of Finance
- Ryan Starks - Vice President of Academic Affairs

**Academic Integrity Board Members**

- Andrew Durlak
- Thomas Rehman
- Michael Greer
- Jennifer Rischar
- Elyse Moretti
- Jameson Root

**Orientation Leaders**

- Jessica Barnes
- Amanda Perkins
- Thomas Boatwright
- Srujana Reddy
- Bethany Craig
- Jameson Root
- Lora Doleh
- Micah Sanders
- Daniel Donato
- Oliver Small
- John Erickson
- Jackie Staple
- Brittany Isner
- Matthew Stone
- Jessica Jensen
- Kimberly Sullivan
- Jens Johnson
- Harmon Tam
- Alia Majid
- Nan Tian
- Seetal Mishra
- Edgar Wilson
- Elyse Moretti

Congratulations to First Year Student Leaders cont...

**Resident Assistants**

- Sara Abdollahian
- Sulekia Auddino
- Nicole Blanchette
- Megan Brady
- Andrew Clary
- Jake Crandall
- Katie DiSimone
- Zach Fredin
- Marianne Hinde
- Greg Irwin
- John Jervinsky
- Cassandra Kornbau
- Victoria Ma
- Ester Magill
- Joe Poku
- Tom Rehman
- Jeffrey Verespej
- Abigail Vinson
- Nina Zobenica



28<sup>th</sup> Annual Math Gala...a Hawaiian Luau

Do Some Calculus and Get Lai-d!

Tuesday, April 27<sup>th</sup>  
1:00 - 6:00 p.m.  
Thwing Ballroom

Thousands of wings and thousands of calculus problems...don't miss out on this final exam extravaganza!

Chemistry Fiesta

Wednesday, April 28<sup>th</sup>  
1:00 - 6:00 p.m.  
Schmidt Auditorium

Don't miss out on the chemistry exam review to rival all exam reviews. What can be more fun than spending 5 hours of your time talking about chemistry?! So, come and get your CHEM 106 solutions and do some bonding too! Now on to O Chem!! ☺

**Case's Premiere Night Club  
Is Back**

**POINT BLUE**  
CARLTON COMMONS

**Thursday April 15<sup>th</sup>**

10pm-2am  
Top of the Hill

Greenies run till 2:30  
CASE ID required



Hudson Relays...Case's Oldest Tradition

April 24, 2004

Get up early and come out to support the Class of 2007 runners!

Registration

Saturday, April 24, 2004; 8:00 a.m.: Tomlinson Gallery

Registration for the race will take place in Tomlinson Gallery in Tomlinson Hall. Bagels and juice will be available to all runners. Team pictures will be taken at approximately 8:30 a.m.

The Race

Saturday, April 24, 2004; approx. start time 9:15 a.m. ; Adelbert Rock

The race will kick off behind Adelbert Hall as Case President Edward Hundert reads the annual message from the headmaster of Western Reserve Academy as delivered by the commemorative runners.

The Finish

Join us by 11:15 a.m. at the conclusion of the Race back at Adelbert Rock to toast the winners of this year's event!



7<sup>th</sup> Annual Springfest 2004

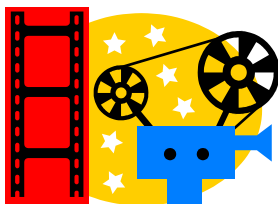
Saturday, April 24, 2004, Freiberger Field

<http://home.cwru.edu/springfest/>

After the Hudson Relays head over to Frieberger Field for some food, music, fun and more!

Springfest Mission Statement

"Springfest is a celebration of Case community, designed to foster campus unity among students, faculty, staff, administration, alumni, and friends of the University. This festival composed of live performances and novelty attractions aims to generate school spirit and carry on a tradition."




---



---

### Movies

---



---

All movies listed below will be shown at Strosacker Auditorium. For more information, go to <http://films.cwru.edu/>

- 4/16 Lord of the Rings: Return of the King**  
7:00 p.m., 10:00 p.m.
- 4/17 Ice Age**  
7:00 p.m., 9:00 p.m.
- 4/23 Mystic River**  
7:00 p.m., 10:00 p.m.
- 4/24 Grosse Pointe Blank**  
7:00 p.m., 9:30 p.m.

---

### Seminars, Talks, Colloquia, Performances

---

**4/15 Women's Wellness and Fitness Expo;** Location: Veale Center; 9:00 a.m. - 6:00 p.m.; Contact: Dana Blocker, [deb15@case.edu](mailto:deb15@case.edu), 368-0985

**4/19 Genetic Mapping of Neural Circuits for Defensive Behaviors in Flies and Mice - Dr. David Anderson;** Location: SOM E609; 12:00 - 1:00 p.m.; Contact: Gina Ventre, [glv@case.edu](mailto:glv@case.edu); 368-6252.

**4/20 Film and Discussion - Boys Don't Cry;** Location: Center for Women, Thwing 309; 8:00 - 10:30 p.m.; Contact: Ginnette Boyarko, [geb9@case.edu](mailto:geb9@case.edu), 368-0985.

**4/21 X-Men as J-Men: The Jewish Subtext of a Comic Book Movie - Dr. Lawrence Baron;** Location: Clark Hall, Rm. 309; 4:30 - 6:00 p.m.; Contact: Laura Sielen, [lks18@case.edu](mailto:lks18@case.edu); 368-2414.

**4/21 University Circle Orchestra;** Location: Thwing Ballroom; 8:00 p.m.; Contact: 368-2400.

**4/26 Immunoregulatory Function of Mesenchymal Stem Cells - Omer Koc, M.D.;** Location: Millis, Rm. 123; 4:00 - 5:00 p.m.; Contact: Debbie Bush, [debra.bush@case.edu](mailto:debra.bush@case.edu), 368-3562.

---

### Campus Events - University Program Board (UPB) Calendar

<http://home.cwru.edu/upb/>

---

- 4/14 Student Leadership Awards;** Location: Thwing Ballroom; Time: 7:00 p.m.
- 4/14 Spot Night - TBA;** Location: The Spot; Time: 9:30 p.m.
- 4/15 Cinderella Ballet Tickets on Sale;** Location: Thwing Atrium; Time: 12:00 - 1:00 p.m.
- 4/16 Eve 6;** Location: Adelbert Gym; Time: 7:00 p.m.
- 4/21 Spot Night - Grand Buffet & Girl Talk;** Location: The Spot; Time: 9:30 p.m.
- 4/22 Joe & Jive Coffeehouse Night - Art Break;** Location: Rough Rider Room; Time: 9:30 p.m.
- 4/22 Andrew WK;** Location: The Spot; Time: 9:30 p.m.
- 4/23 Hudson Relay Dinner;** Location: Thwing Ballroom; Time: 7:00 p.m.
- 4/24 Hudson Relays;** Location: Adelbert Rock and Various Campus Locations; Time: 8:00 - 11:00 a.m.
- 4/24 Springfest;** Location: Frieberger Field; Time: 12:00 - 8:00 p.m.

---

### ESS Final Exam Calendar

---

ESS wishes you the best for your finals! Check out the special planning calendar for preparing for your finals: <http://ess.case.edu/onepg/>

**Have a Great Summer!**

