

First Year Student Newsletter

Volume 8.3

November/December 2003

Produced by
Julie L. Amon, Assistant Dean for First Year Students
and the Office of Undergraduate Studies

Greetings from the Dean

POLICY-PALOOZA

It's that time of the year when the air is crisp and clear, the scent of burning leaves is in the air, there's talk of snow and...students are filled with academic policy questions!

- Can I get an overload?
- When do I register?
- How do I register?
- Can I pass/no pass my class?
- When is the last day I can withdraw from classes?

Sound familiar? Well, this edition of the First Year Student Newsletter is rather dense with policy issues that impact your academic decision making. Most answers to your questions can be found in your *2003-2004 Handbook for Undergraduate Students* that you received during Orientation. (You can also access this on-line at

<http://www.cwru.edu/provost/ugstudies/handbook2003.pdf>)

You should also consult with your first year adviser for answers to these common questions. I encourage you to take the time to review these policies, and hang onto this newsletter as a quick reference guide to many common questions that you will encounter as you reach the end of your first semester.

I have enjoyed getting to know many of you throughout the fall and for those of you that I have not met, please consider stopping by Sears 357 or calling 368-2928 to set up an appointment so I can get to know you. You can also drop me an email at deanamon@case.edu.

I truly hope that you have enjoyed your educational experiences this fall and that you now feel a part of the CASE community. Also, I want to wish you the best of luck on your finals. I am confident that you will excel and that you will see your hard work pay off.

Finally, I would like to wish all of you a very happy holiday season!! I hope your winter break is full of rest, relaxation, reflection, and rejuvenation for the Spring Semester.

Preparing for Spring Registration

The first day that first year students can register for spring classes is **November 20, 2003**. In order to register, all students are required to meet with an adviser each semester to discuss their progress and plans for the upcoming semester. Each semester the advising period begins two weeks prior to senior priority registration. Additionally, students only receive their PIN after having met with their adviser. By now, you should be developing questions about and plans for the spring semester, as well making arrangements to meet with your adviser to discuss your spring semester schedule. In preparing to register for your class via SOLAR, bare in mind that there is a limit to how many people can use SOLAR at any given time, so if you are unable to connect on your first try, just log-on again a little bit later. Also, registration continues through January 23, 2004 - - the second week of classes.

Students have a responsibility to prepare for their advising appointments. Prior to your advising appointment, you should consider the following issues:

- Thoughts on academic major(s), minor(s) - changes, questions and requirements
- If applicable, completed or intended course withdrawals and implications of the withdrawal
- Progress toward completion of General Education/Core/SAGES Requirements (including AP/IB/transfer credit if applicable)
- How the semester has gone so far - grades, use of support resources, favorite class, time management, etc.
- Overall feelings about CASE thus far - acclimation, connection, engagement - - any questions that you have
- Courses that you are considering for next semester (and alternates in the event that first choice courses are not available)

Students should bring the following to the advising appointment:

- *2003 - 2004 Handbook for Undergraduate Students*
- Your Degree Progress Report (DPR)
- List of courses that you are considering for the next semester - - make sure to check course availability, course prerequisites and course descriptions by using the Searchable Schedule of Classes at <http://www.cwru.edu/courses/catalog>
- Questions
- Open mind

ENGL 150

The English Composition Requirement - ENGL 150 - *must be completed by the end of the first year with a grade of C or higher*. The following students must register for ENGL 150 in the spring semester:

1. *All students currently enrolled in ENGL 148*, unless advised by your instructor to register again for ENGL 148. Students who register for ENGL 148 Spring 2004 will be expected to complete ENGL 150 during Summer or Fall 2004. Students who are enrolled in ESL sections of ENGL 148 should register for ESL sections of ENGL 150.
2. *All students who have not yet taken ENGL 150*, unless exempted by an AP exam score or transfer credit. Remember, AP credit for ENGL 150 was awarded only to those students receiving a 4 or 5 on the AP Language and Composition exam. Students with transfer credit for ENGL 150 must have also successfully completed the English Placement Exam. If the English Placement Exam was not passed, students must register for ENGL 180.

Physical Education in the Spring Semester

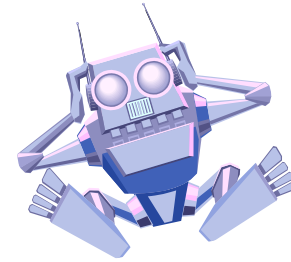
All first year students should plan on registering for Physical Education Activity course(s) in the spring semester. You may include one or two $\frac{1}{2}$ semester courses, a full semester course, or a Varsity Sport.



Calculus Course Information

MATH 122 is open to students who pass MATH 121 or to students who either pass MATH 125 with a grade of A or B, or pass a MATH 121 proficiency examination to be given by the Department of Mathematics on *Friday, January 9th*. MATH 125 students who wish to enter MATH 122 *must* take the MATH 121 proficiency exam (see Chris Butler in Yost 317 for a MATH 121 syllabus). Students who wish to take the MATH 121 proficiency examination must request permission to do so; permission forms are available in Sears 357. MATH 122 is the second semester of a four-semester sequence in calculus and differential equations for engineering, mathematics, and physical science majors.

MATH 126 is open to students who pass either MATH 125 or MATH 121. MATH 126 is the second semester of a two semester sequence in calculus for students in the social sciences, life sciences, management, or humanities, who plan to complete a B.A. degree, or a B.S. in management or biology, and who wish to take only one year of calculus. MATH 126 introduces students to topics from MATH 122, 223, and 224.



"Robots and Motion Planning"
The EECS Undergraduate Seminar Series presented
by Professor Mike Branicky

Friday, November 21, 2003
2:30 - 3:20 p.m.
Wickenden 322

From my days as a student at CASE through being a professor here now, I have been interested in robots. More particularly, I have explored algorithms for controlling robots and planning their movements. Join me in a video-filled trip that covers the full spectrum of robot motion planning, from its origins in the late seventies through cutting-edge research today, including the work of my own students here at CASE. Applications of our work extend beyond industrial manipulators to digital actors, drug design, air traffic control, and complex systems verification. (Our work is on-going and research positions are available for qualified undergraduate students!)

All are encouraged to attend!!

For more information please contact Professor Mike Branicky at msb11@case.edu.

Registering for Courses Requiring a Permit

Some courses require instructor permission to register. There are two ways in which an instructor can grant permission to enroll to a student: (1) a paper form that is presented to the Registrar's Office with the accompanying drop/add form; or (2) an electronic permit used in concert with SOLAR registration. It is important to remember that the issuing of a permit does not mean that a student is registered for the course. The permit must be accompanied by a registration action - either on paper/in-person or on-line through SOLAR.
<http://www.cwru.edu/provost/registrar/online/permitfaq.html>



Overloads (Handbook p. 67)

The normal full-time load is 14-18 semester hours. Continuing students may carry 19-21 hours if they have a cumulative GPA ≥ 3.20 . To register for 22 or 23 hours a minimum GPA of 3.50 is required. Any schedule of more than 18 hours requires dean's approval. Graduating seniors will be approved for overloads if they need such a schedule in order to graduate at the end of the semester in question.

So, if you are interested in taking an overload in the spring, you will need to wait until you have returned in January when we can look at your cumulative GPA. For now, you should plan on registering for a maximum of 18 hours. Make sure to include courses in your schedule as you register this November that you think might be difficult to schedule around or that might fill up. If you earn at least a 3.20 GPA this fall, you can come into the Office of Undergraduate Studies once you return in January and seek a Dean's approval to add a course to your schedule.

Proficiency Exams

Students wanting to try to take a proficiency exam should contact the academic department prior to leaving for Winter break. You should consider a proficiency exam if you took an AP course/exam but did not earn CASE credit for it or if you feel that you have an exceptional amount of expertise in a certain field based on previous experiences. Students interested in taking a mathematics proficiency exam must pick up a permission form in the Office of Undergraduate Studies, Sears 357 prior to January 5th.

ENGR 145 - - Friday, January 9, 2004, 9:00 AM - 12:00 PM (White 411) *

MATH 121, 122, 125, 126, 223, 224 - - Friday, January 9, 2004, 1:00 - 4:00 PM (Yost 300) **

PHYS 115, 116, 121, 122, 221 - - Saturday, January 10, 2004, 9:00 AM - 12:00 PM (Rockefeller 301)

ENGR 131 - - Tuesday, January 13, 2004, 6:00 - 9:00 PM (Olin 703)

CHEM 105, 106, 111 - - Tuesday, January 13, 2004, 6:00 - 9:00 PM (Clapp 201)

* Consent from ENGR 145 instructor (David Matthiesen) required prior to exam.

** Request form signed by Dean Amon and Professor Butler required.

Midterm Grade Reports

By now you should have both reviewed your midterm grades on-line at http://www.cwru.edu/provost/registrar/stuinfo_reg.htm and also spoken with your first year adviser about your midterm progress. Perhaps as a result of your midterm grades you have tried some new study strategies and used some support resources. If you feel that you still might need to withdraw from a course, please review the information in this newsletter on course withdrawals, talk to your first year adviser, and make sure to get the withdrawal processed before **5:00 PM on December 5, 2003**.



Withdrawing from a Course (Handbook p.68)

As a first year student subject to the First Year Student Grading Policies, you may withdraw from a course(s) up until the last day of classes - - this fall, that is **December 5, 2003**. In order to withdraw from a course you must get the approval of your first year adviser and a Dean in the Office of Undergraduate Studies. Once approved, you may then take your signed drop/add form to the Registrar's Office for processing. Before you seek approval for a withdrawal, please take the time to reflect and review the following issues:

- Why are you withdrawing from this course? How are the rest of your courses going this semester? How do you feel about the withdrawal?
- Have you talked to your professor about your progress/success in the course?
- Have you reviewed the syllabus? Do you know what your chances for improved success are in the course?
- Have you taken advantage of support resources: professor office hours, TUBA and on-going tutoring through ESS, SI's, etc.
- Have you thought about how this withdrawal will impact your plans for next semester? Will this withdrawal have an impact on your degree completion?

Learning Assistant (LA) Website Now LIVE

<http://ess.case.edu/>

Meet Your LA Part Deux

Learn more about your LA and how s/he can make your living and learning environment a positive experience. Your LA knows A LOT about being a successful student and being an engaged CASE student so take advantage of his/her expertise.



Application Deadline Around the Corner for the College Scholars Program (CSP)!

<http://www.cwru.edu/arts/scholars/>

CSP is a special opportunity. It is a three-year program that emphasizes *academic excellence, community involvement and the development of leadership skills*. It has a special focus on student-directed learning; unlike most academic programs, where the curriculum is designed exclusively by the faculty; in CSP students take an active role in shaping the content. Students admitted to CSP form a cohort with the rest of their class, and work and learn together for 3 years. Other program benefits include meetings with the eminent speakers the program brings to campus, and the opportunity to live in Scholars House, a renovated Victorian house on south side. **Applications will be mailed to all 1st year students in December.** Interested students may sit in on classes before applying. To arrange a visit, or to learn more about the program, contact Professor Jonathan Sadowsky at jas34@case.edu.

First Year Student Grading Policy a.k.a. "Freshman Forgiveness" (Handbook p. 69)

This policy is applicable to first time first year students in their first two semesters of full-time enrollment. It is not applicable for students taking summer classes at CASE or for transfer students. Simply put, the First Year Student Grading Policy specifies that F's, NP's and W's received in the first two semesters of full time attendance will not appear on the official transcript and will not be included in the computation of cumulative GPA. However, F's will be calculated into the Scholarship GPA (see Scholarship Retention).

Scholarship Retention (Handbook p. 72)

At the end of each academic year (June), the records of all scholarship recipients will be reviewed. To have a scholarship renewed for the following academic year, a recipient is expected to satisfy two requirements: a minimum number of hours earned after enrolling at CASE and a minimum cumulative GPA. In order to retain your Trustee's, President's or Provost's Scholarship you must have earned at least 21 hours with a cumulative scholarship GPA* of 1.75.

* The Scholarship GPA includes all courses posted for grades including F grades earned through the First Year Student Grading Policy and both grades earned through the use of the Repeat Option. Therefore, the statement 'I'll just take an F because freshman forgiveness saves me' represents a very ill-advised strategy. If you are facing a possible D or F in a course, it makes more sense to withdraw than it does to risk the impact on your GPA and the possible loss of your scholarship.

Maintaining Academic Good Standing (Handbook p. 71)

Academic standing comprises two factors: credit hours earned and GPA. To maintain good academic standing at the end of the first semester, a first year student must earn at least 9 credit hours with a 1.70 GPA. By the end of the first year, students must earn a total of 21 credit hours with a 1.75 GPA. A student who does not meet these minimum requirements will be placed on academic probation.

Pass/No Pass (Handbook pp. 69-70)

If you are a full-time student in good academic standing, you have the option of electing to have one course graded on a Pass/No Pass basis. **In order to do this, the course must NOT:**

- Be a course required for your General Education/Core/SAGES Requirements including Humanities or Social Science Sequences
- Be a course required for an intended major or minor

i.e. The Pass/No Pass option may only be used for Open Electives.

The Pass/No Pass option may be exercised by filing a form in the Office of Undergraduate Studies, Sears 357 during the last 3 days of classes - December 3, 4 or 5, 2003. Instructors are not notified of a student's use of this option. They are required to submit evaluative grades for all students and these are converted to Pass/No Pass in the Registrar's Office. Grades of P earn credit but are not calculated into the cumulative GPA. Grades of NP do not earn credit and are not calculated into the cumulative GPA.

Incompletes (Handbook pp. 69)

An Incomplete (I) can only be assigned by the professor if there has been a previous conversation with the student outlining extenuating circumstances, explained *before* the assignment of the grade, which clearly justifies an extension of time beyond the requirements established for and met by other students in the class. Additionally, an Incomplete can only be assigned if the student is passing the course and only one small segment of the course remains to be completed. An Incomplete cannot be assigned because a student is absent from a final exam unless the Dean of Undergraduate Studies has authorized the absence in advance.

Fall Final Exams Schedules (Handbook p. 67)

It is important that you consult your syllabus and the final exam schedule. Final exams dates *will not* be altered to accommodate travel plans. You can find the Final Exam Schedule on the Registrar's website at <http://www.cwru.edu/provost/registrar/exams/exam041.html>. Make sure you confirm your exam schedule and make your travel plans accordingly.

12/5	Last Day of Classes
12/8 - 12/9	Reading Days
12/10	Final Exams Begin
12/17	Final Exams End

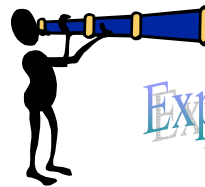
* No student will be required to take more than two final examinations on a single day. A student who has three final examinations scheduled for a single day should go to the Office of Undergraduate Studies and obtain the assistance of the Dean in arranging to take one of those examinations on an alternative day during the final examination period. Similarly, a student with conflicting examinations should seek the assistance of the Dean of Undergraduate Studies in arranging to have the time of one examination changed.

Degree Progress Reports (DPR's)

Degree Progress Reports are generated by the Office of Undergraduate Studies for all students. The reports document progress toward degree completion. The DPR lists completed courses in addition to remaining courses. This will become an even more important tool after you declare your major. As a first semester student, you should check your DPR especially if you anticipate earning AP, IB or transfer credit. Credit for those courses should be posted on your DPR. You can access your DPR through the following website: <http://www.cwru.edu/provost/ugstudies/DPR.htm>.

General Education/Core/SAGES Requirements

The General Education/Core/SAGES Requirements represent the foundation of all degree programs at CASE. As such, they are a vital part of your educational experience, impart essential skills and expose you to a breadth of knowledge. Each school and college has its own requirements in these areas. Make sure that you understand your requirements by looking in your *2003-2004 Handbook for Undergraduate Students* and by picking up General Education/Core/SAGES Requirement check sheets in the Office of Undergraduate Studies in Sears 357. The check sheets are also available on the Office of Undergraduate Studies website at <http://www.cwru.edu/provost/ugstudies/gencoreforms2003.pdf>.



Explore the Possibilities

Declaration of a Major

Some of you have asked about declaring a major. First year students are undeclared upon matriculation* to CASE and can first declare a major after the Choices Fair in the spring semester of their first year. Choices 2004: Exploring Academic & Experiential Opportunities Fair is an opportunity for you to explore and/or confirm your academic interests by meeting and talking with faculty representatives of all majors and minors offered at CASE. If you are ready to do so, you may declare your major **after** attending the Choices Fair.

Mark your calendars now!

Choices 2004:

Exploring Academic & Experiential Opportunities Fair will be held in the Thwing Ballroom from 11:30 AM - 1:30 PM on February 12, 2004.

* Nursing students are already declared and do not need to declare a Nursing major.

Sport Support

Check out the winter varsity athletic events (<http://www.cwru.edu/athletics/varsity/>) and cheer on your fellow Spartans!



**New Course - Spring 2004
ASTR 151: Doing Astronomy**

This 1 credit hour seminar-style course is intended for prospective Astronomy majors, or students interested in a career in astrophysics. Topics discussed include: what do astronomers really do? What is a career path in astronomy like? How does one actually do astronomical research? What are the "hot topics" in astrophysics today? How can students get involved? Students interested in taking the course should contact the instructor, Professor Mihos (mihos@case.edu).

The Resource Center @ Wade - Grand Opening
Wednesday, November 19, 2003
4:00 - 7:00 PM in Wade Commons

- Pick up resources and information;
- Meet and greet - mix and mingle with students, faculty and staff;
- Celebrate the opening, enjoy some food and have some FUN!

Check out the Newest 24 Hour
 Quiet Study Space @ CASE

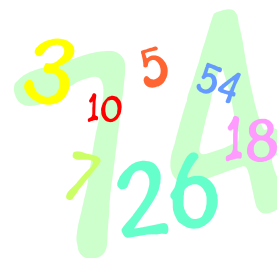
Staff and Offices in the Resource Center @ Wade

- Skip Begley, North Residential Village Coordinator
- Dana Blocker, Women's Health Advocate
- Peer Helper Network Office
- RUSS - Residential Undergraduate Studies Satellite



New Course - Spring 2004
PHYS 166: Physics Today and Tomorrow (1 credit hour)
Mondays, 2:30 - 3:20 PM, Rockefeller 309

This one-credit-hour course will provide students with an opportunity to learn about the most exciting and timely research areas in physics, as well as other topics germane to being a professional physicist. These discussions will cover fields such as nanoscience, ultrafast optics, exotic materials, biophysics, cosmology, string theory and the role of physicists in developing new technologies. Each week a different member of the faculty will meet with students to discuss a topic of current interest, how a physicist approaches the problem, and how physicists interact with others to find a solution. Other topics germane to being a professional physicist also will be discussed, including the relationship among academic, industrial, and governmental laboratories; ethics; and non-traditional careers for students trained in physics. Although the course is aimed primarily at freshmen, upperclassmen also are welcomed. For more information, contact Dr. Rosenblatt, ext. 4125, rosenblatt@case.edu.



Don't Miss the 27th Annual Math Gala - A Charlie Brown Math Gala that is...

Monday, December 8, 2003
1:00 - 6:00 PM
Thwing Student Center Ballroom

Top 8 Reasons to Come to the Math Gala

1. Free food
2. Fun
3. Chris Butler, MATH SI's and a bunch of CASE's best and brightest
4. Music
5. A great way to prepare for your Math Final
6. The possibility of interpretive dance representing related problems performed by members of the faculty and administration
7. Stress free and effective way to get ready for your math final
8. #1 Social Event at CASE as reported by Scene magazine

Questions? Talk to Chris Butler and the Math SI's - Yost 317 and 368-2881.



The Chemistry Fiesta

Tuesday, December 9, 2003
1:00 - 6:00 PM
Schmitt Lecture Hall

Don't miss out on the chemistry exam review to rival all exam reviews. What can be more fun than spending 5 hours of your time talking about chemistry?! So, come and get your CHEM 105 and CHEM 111 solutions and do some bonding too!

The US and Europe
What Now for "the West?"

October 27, November 6, 10, 17

A series co-sponsored by
Case Western Reserve University
and the Cleveland Council on World Affairs

The United States and Europe:
What Now for "The West?"

A Series Co-Sponsored by Case Western Reserve University
and the Cleveland Council on World Affairs

October 27	Guns: The Use of Military Power
November 6	Butter: What Kind of Global Economy?
November 10	Beliefs: National Cultures and National Interests.
November 17	Geography: Old and New Europes, or a New Old Europe?

The United States and Europe: What Now for "The West?"

A Series Co-Sponsored by Case Western Reserve University and the Cleveland Council on World Affairs

The Bush Administration's effort to build a "coalition of the willing" to overthrow Saddam Hussein's regime in Iraq revealed that key U.S. allies in Europe were not willing at all. But the passions and distrust that controversy revealed suggest that more than Iraq may divide what once was called the Western Alliance. What is the future of relations between America and the nations that make up most of the rest of the world's rich democracies -- the nations that should be our partners in progress?

Since the fall of the Berlin Wall, the nations of Europe have been challenged to build new relationships with each other. American policymakers have had to consider what they want from a Europe that is no longer a bulwark against, or threatened by, the Soviet state. European monetary union, symbolized by the Euro, has made the idea of a European super-economy, challenging America's economic dominance, more plausible. Conflicts have arisen over issues ranging from the environment, to trade, to international justice. But controversy over Europe's internal arrangements may be as significant as concerns about its states' relations to the United States. What might be Europe's future, and how could it affect America?

This series of forums brings speakers with many perspectives and wide expertise to the Case campus to provide views of the choices faced on both sides of the Atlantic. All events are free and open to the public.

For program details including event time and location and session descriptions visit the Center for Policy Studies website at <http://www.cwru.edu/artsci/cps/>.

3rd Annual "Phi K" Race for the Kids Saturday, November 8, 2003 @ 10:00 AM

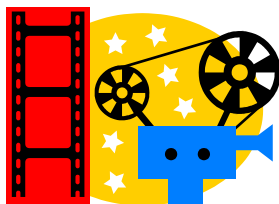
The Phi Kappa Tau Fraternity will be hosting its 3rd Annual "Phi K" Run for the Kids on Saturday, November 8, 2003, at 10:00 AM. The "Phi K" is a 5K run and noncompetitive walk with all proceeds going to the Hole in the Wall Gang Camps charity. With the prodigious success of its first two years, this year should be the biggest and best ever.

The course canvasses the north side of the CASE campus, beginning and ending by the Leutner Dining Hall, across from Finnegan Field on East 115th Street. Parking is available behind the track at a lot off East 118th Street. Medals will be awarded to the top three competitors in each age category, and trophies will be awarded to the top male and female finishers. Additionally, there will be food, drinks and raffle prizes for all entrants.

The charity benefiting from this event will be the Hole in the Wall Gang Camps. The Camps, started by Phi Kappa Tau alumnus Paul Newman, provide children with chronic illness the opportunity to enjoy a normal summer camp experience at no charge. Camps are currently located in three states and two foreign countries. Every dollar goes to help a chronically ill child have the time of his or her life at one of the Hole in the Wall Gang Camps. For more information visit <http://www.hitwgcamps.org>.

To learn more about "Phi K" contact Greg Doerk (gsd4@case.edu or 754-1084) or you can visit the race website at <http://home.cwru.edu/~jxh107/race.html>. Registration for the "Phi K" can be completed on this website.





Movies

All movies listed below will be shown at Strosacker Auditorium. For more information, go to <http://films.cwru.edu/>

- 11/7 **Hulk**
7:00 PM, 10:00 PM
- 11/8 **The Mouse That Roared**
7:00 PM, 9:00 PM
- 11/14 **Terminator 3: Rise of the Machines**
7:00 PM, 9:30 PM, 12:00 AM
- 11/15 **The Big Picture**
7:00 PM, 9:30 PM
- 11/21 **Bend It Like Beckham**
7:00 PM, 9:30 PM, 12:00 AM
- 11/22 **When Harry Met Sally...**
7:00 PM, 9:30 PM
- 12/5 **Pirates of the Caribbean:
The Curse of the Black Pearl**
7:00 PM, 10:00 PM
- 12/6 **Singin' in the Rain**
7:00 PM, 9:30 PM

Seminars, Talks, Colloquia, Performances

- 11/4 **Evolution of Human Bone Shock Absorbers - Dr. Charles Kunos**; Location: Kelvin Smith Library Dampier Room; 11:30 - 1:00 PM; Contact: Cynthia Beall, cmb2@case.edu, 368-2277.
- 11/4 **University Circle Orchestra**; Location: Thwing Ballroom; 7:30 PM; Contact: Department of Music, 368-2400.
- 11/6 **Heritage and Cultural Celebration**; Location: Thwing Ballroom; 11:00 AM - 2:00 PM; Contact: Carolyn Gerich, cag16@case.edu, 368-2458.
- 11/6 - 11/9 **Tracings**; Location: Mather Dance Center; 8:00 PM (11/6 - 11/8) and 2:30 PM (11/9); Contact: Beth Salemi, ess@case.edu, 368-2854
- 11/7 **The Prodigal Son in the Gothic Cathedral: Art and Subjectivity in the Thirteenth Century- Professor Gerald Guest**; Location: Cleveland Museum of Art Lecture Hall; 12:30 - 1:30 PM; Contact: Debby Tenenbaum, dxt6@case.edu, 368-4118.
- 11/8 - 11/9 **SatCo Classes - Go to <http://ess.case.edu/vision> for information and registration**; Location: Various Locations; 8:00 AM - 5:00 PM; Contact: Mayo Bulloch, mxb14@case.edu, 368-5230.
- 11/10 **Repair of a critical size bone defect: cells and/or materials?** - Dr. Jizong GAO; Location: Millis Science Center, Room 123; 4:00 - 5:00 PM; Contact: Debbie Bush, ddb9@case.edu, 368-3562.

Seminars, Talks, Colloquia, Performances cont...

- 11/14 **The Past, Present, and Future of the Federal Circuit**; Location: School of Law, Moot Court Room (A59); 9:00 AM - 4:30 PM; Contact: Development and Public Affairs, lawalumni@case.edu, 368-3308.
- 11/18 **The Mediating Role of Organizational Legitimacy in a Resource-Based Models of New Venture Performance - Dissertation Defense**; Location: PBL Room 121; 9:00 - 11:00 AM; Contact: Branko Bucar, bx41@case.edu, 368-5372.
- 11/18 **Go Fish - movie followed by discussion**; Location: Center for Women, Thwing 309; 8:00 - 10:30 PM; Contact: Ginette Boyarko, geb9@case.edu, 368-0985.
- 11/19 **Evolution of Whales: A Major Morphological Transition - Dr. J.M.G. "Hans" Thewissen**; Location: DeGrace Hall, Room 312; 4:30 - 5:30 PM; Contact: Cynthia Beall, cmb2@case.edu, 368-2277.
- 11/20 **Civil Liberties After 9/11 - Anthony Lewis**; Location: Thwing Ballroom; 4:30 - 6:00 PM; Contact: Laura Sielen, lks18@case.edu, 368-2414.
- 11/20 - 11/21 **Tau Beta Pi Firesale**; Location: Bingham 102; 9:00 AM - 4:00 PM; Contact: Ryan May, rxm99@case.edu.
- 11/23 **University Singers**; Location: Harkness Chapel; 2:30 PM; Contact: Department of Music, 368-2400.
- 12/1 **Epithelial-Mesenchymal Interactions in Human Skin - Dr. J. Michael Sorrell**; Location: Millis Science Center, Room 123; 4:00 - 5:00 PM; Contact: Debbie Bush, ddb9@case.edu, 368-3562.
- 12/2 **Do Rural Medicare Patients Have Different Post-Acute Service Patterns than their Non-Rural Counterparts? - Dissertation Defense**; Location: School of Nursing #203J; Contact: Cindy Boyer, cxb56@case.edu.
- 12/16 **Legally Blonde - movie followed by discussion**; Location: Center for Women, Thwing 309; 8:00 - 10:30 PM; Contact: Ginette Boyarko, geb9@case.edu, 368-0985.

Campus Events - University Program Board (UPB) Calendar - <http://home.cwru.edu/upb/>

- 11/4 **Joys of Censorship - Joe Raiola**; Location: Strosacker; 7:00 PM
- 11/5 **Spot Night - Alligators**; Location: The Spot; 9:30 PM
- 11/10 **O.A.R.**; Location: Adelbert Gymnasium
- 11/11 **UPB Bingo Night**; Location: The Spot; 9:00 PM
- 11/12 **Spot Night - Karaoke Night**; Location: The Spot; 9:30 PM
- 11/13 **Case Show-Off**; Location: Fribley Commons; 9:30 - 11:30 PM
- 11/13 - 11/14 **Medieval Dinner**; Location: Fribley Fireside; Time TBA
- 11/14 **Broomball**; Location: Cleveland Heights Ice Rink; 10:00 PM - Midnight
- 11/18 **Dominance of African American Professional Athletes - Jon Entine**; Location: Hatch Auditorium; 7:00 PM
- 11/19 **Spot Night-Battle of the Bands**; Location: The Spot; 9:30 PM
- 11/20 **Joe & Jive Coffeehouse Night-Art Break**; Location: Rough Rider Room; 9:30 PM
- 12/2 **UPB Bingo Night**; Location: The Rough Rider Room; 9:00 PM
- 12/3 **Spot Night-TBA**; Location: The Spot; 9:30 PM