

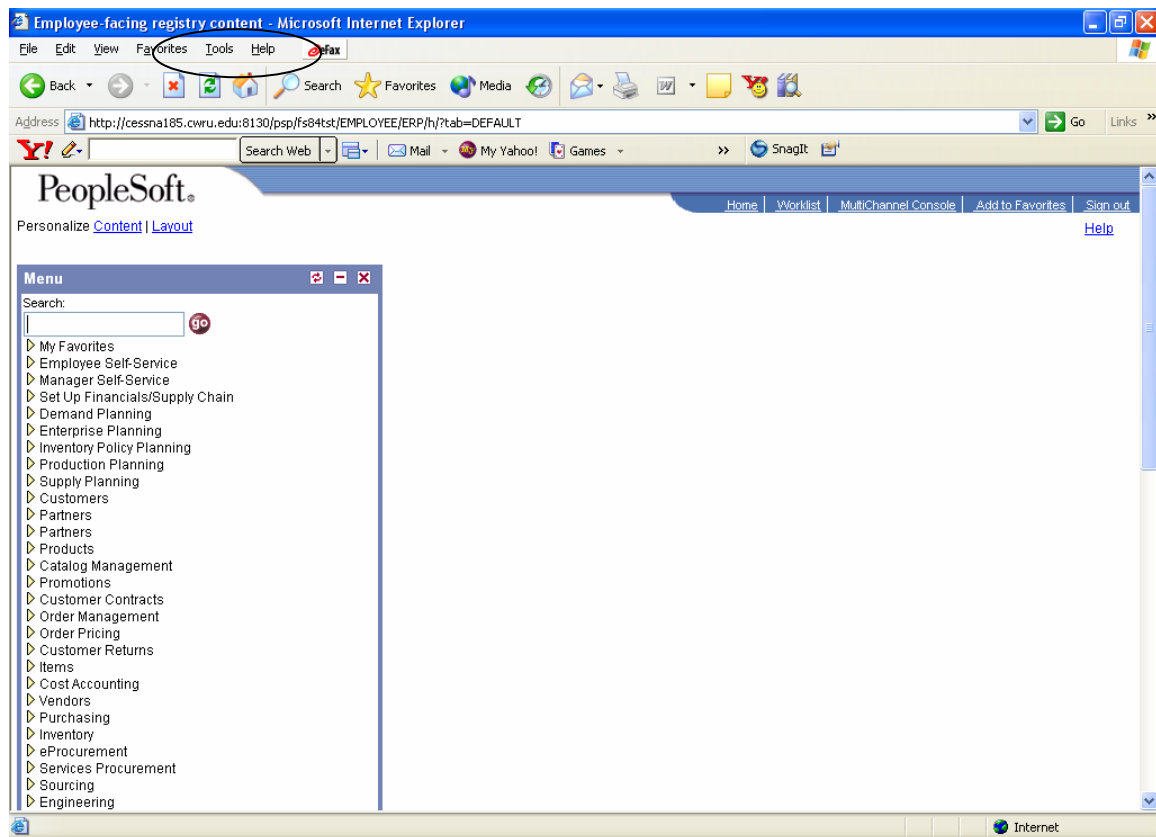
Overview FAQ

What is a crossover table?

The CrossOver table is used to convert FMS data from each of the feeder systems to the correct ChartFields in PeopleSoft. This table also provides a useful tool for users wishing to convert from the FMS chart of accounts to the PeopleSoft ChartFields

What should I do if I can't see something I should be able to see?

At times certain documents, processes, or other views may not appear normally in your PeopleSoft windows. As a first step to solving this problem, before contacting the Help Desk, try deleting the cache from your Internet Browser.

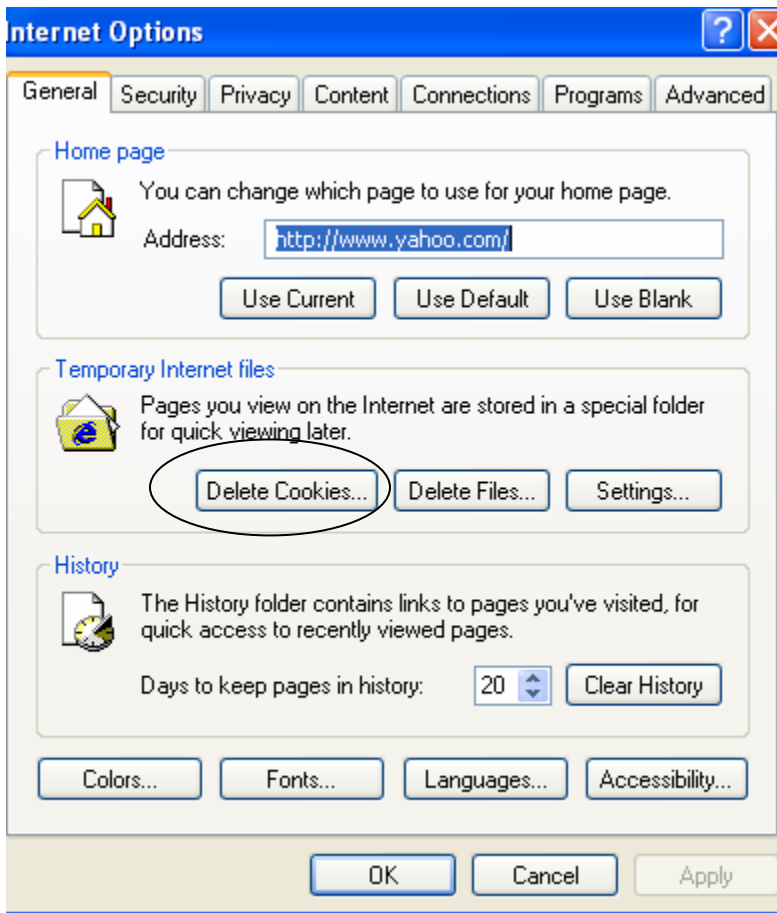


Go to the top of the browser screen and select Tools. The following options will drop down:

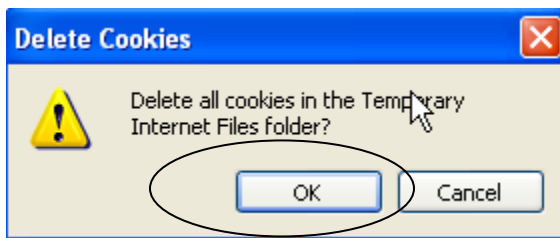
- Mail and News
- Synchronize
- Windows Update
- Yahoo! Messenger
- Sun Java Console
- Reset Web Settings

- Internet Options

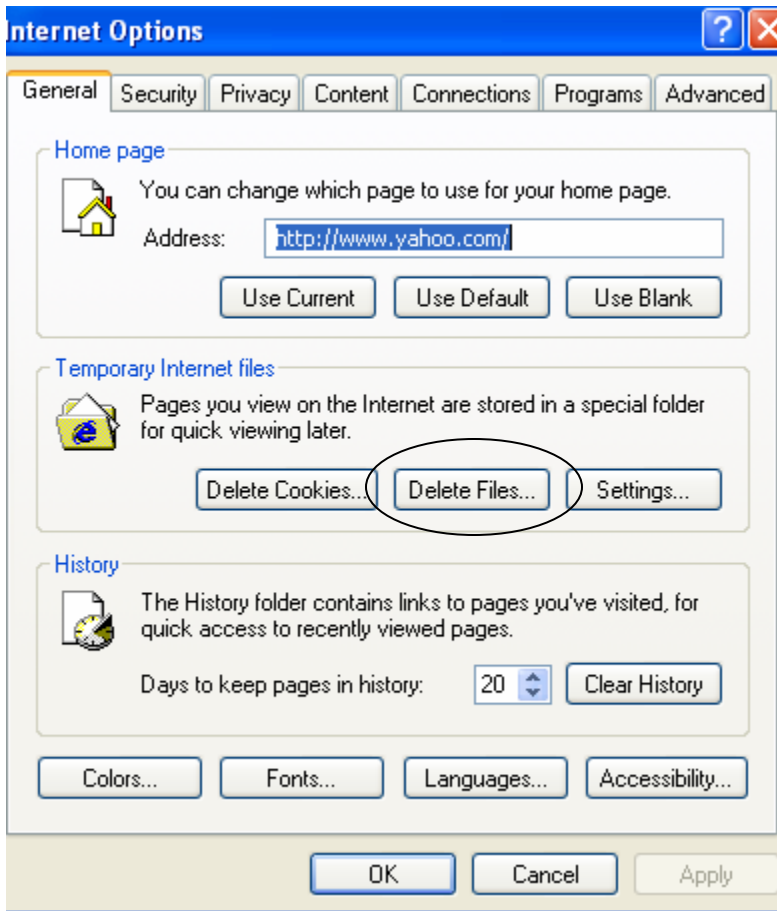
Select Internet Options.



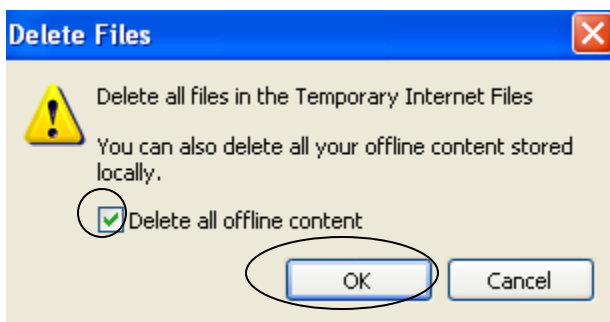
Select Delete Cookies.



Select OK



Select Delete Files.



Check the Delete all offline Content checkbox. Select OK.

Select OK a