



# CASE

CASE WESTERN RESERVE UNIVERSITY

## ADOPT A BUILDING PROGRAM

### WHITE BUILDING

- Built in 1961

**Building Representative**  
e-mail:  
phone:

**Building Representative**  
e-mail:  
phone:

**Student Representative**  
e-mail:  
phone:

**Custodial Representative**  
e-mail:  
phone:

# WHITE BUILDING

Built in 1961, White houses the Department of Materials Science and The Department of Materials Science and Engineering (DMSE) at Case Western Reserve University (CWRU) is a research-centered educational environment whose mission is to enhance the productivity, quality, and benefit of materials-related learning to its students, faculty, and community. DMSE bears a commitment to the improvement of materials technology as an advantaged academic unit equipped with state-of-the-art facilities in areas of materials surface analysis, mechanical characterization, and an extensive suite of advanced electron microscopy instrumentation that act in synergy to consistently thrust us among the top tiers of materials research institutions in the nation. Engineering and contains a small foundry in the basement.



White Building from the Quad

2128 Adelbert Road  
Cleveland, OH  
44106



## RECYCLING INFRASTRUCTURE

Building	Floor	Location	Total	Type
White	2	By vending in entry	1	C
White	3	By entrance: left cubby	3	PGA, PW, MF
White	4	In hallway next to 440	3	PGA, PW, MF
White	5	In hallway next to 530	3	PGA, PW, MF
White	6	In hallway next to 615	3	PGA, PW, MF

### Legend



energyconservation@case.edu  
recycling@case.edu  
216-368-2580  
216-368-4330



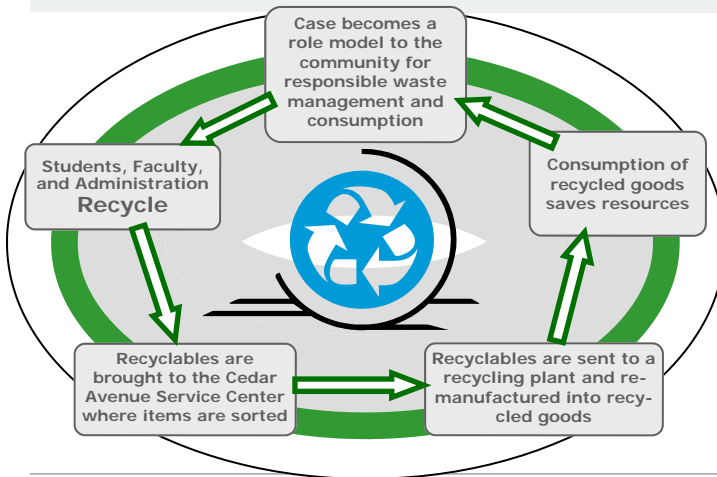
# CASE

CASE WESTERN RESERVE UNIVERSITY

## ADOPT A BUILDING PROGRAM

## WHITE BUILDING

### HOW DOES RECYCLING WORK AT CASE?



- ◆ Pure White Paper
  - Only White Paper, no Envelopes
- ◆ Mixed Fiber
  - Colored Paper
  - All Envelopes
  - Newspaper
  - Magazines and Catalogs
  - Phonebooks
  - Brown Paper Bags
- ◆ Plastic, Aluminum, and Glass
  - Plastics Labeled 1, 2, 3, & 5
  - Plastic Bottles (No Liquid, Remove Caps)
  - Glass Bottles (No Liquid, Remove Caps)
  - Aluminum Cans, foil, steel, bi-metal (No Liquid)
- ◆ Cardboard
  - Corrugated Cardboard. (Identified by the wavy inner layer)
  - Chipboard (cereal boxes, centers of paper towel rolls, etc.)
  - Colored file folders
  - Brown mailing envelopes
  - Brown copier paper wrapper
- ◆ Other
  - Paint, Florescent bulbs, Tires, Telephones, Other Electronics
  - Ink cartridges, Clothing, Soft or Hardcover Books, Styrofoam, Other



energyconservation@case.edu

### ENERGY CONSERVATION MEASURES

An **Energy Conservation Measure (ECM)** is an effort that reduces consumption, or efficiently makes use of any purchased utility or natural resource.

White Features

- More efficient **Fou-dry Exhaust** system
- **Improved Temperature Controls** throughout building

If you have any comments questions, suggestions of concerns please direct them to: [energyconservation@case.edu](mailto:energyconservation@case.edu)

### ENERGY USAGE

Total Campus Electricity Usage

