



CASE

CASE WESTERN RESERVE UNIVERSITY

ADOPT A BUILDING PROGRAM

THWING CENTER

- Built in 1900 and 1912

Building Representative
e-mail:
phone:

Building Representative
e-mail:
phone:

Student Representative
e-mail:
phone:

Custodial Representative
e-mail:
phone:

11111 Euclid Avenue
Cleveland, OH
44106



THWING CENTER

Built in two parts, the west in 1900 and the east in 1912, and renovated in 1980, this student center now contains the offices of CWRU's student newspaper, *The Observer*, the Undergraduate Student Government, and the University Program Board, as well as the Mather Gallery, a ballroom, a post office, two eating establishments (Charlie's Place and Sweet Sensations), the bookstore, a UPS shipping depot, study lounges, and many meeting rooms on the upper floors.

The Undergraduate Student Government sponsors all groups and eases the forming of new student groups. University Program Board brings concerts to campus and takes trips off campus.



Thwing Center from Euclid

RECYCLING INFRASTRUCTURE

| Building | Floor | Location | Total | Type |
|---------------|-------|--------------------------------------|----------------|-----------|
| Thwing Atrium | 1 | atrium East doors | 3 | PW, MM, T |
| Thwing Atrium | 1 | atrium West addition to ramp | 2 | MM, T |
| Thwing West | 1 | against pillar across from bathrooms | 1 | T |
| Thwing West | 2 | cubby under window sill | 1 | MM |
| Thwing West | b | next to computer | 0 | |
| Thwing West | b | next to v-machine | 2 | PW, MF |
| Building | Floor | Location | Total | Type |
| Thwing East | 1.5 | adjacent to USG in right corner | 3 | PW, MM, T |
| Thwing East | 1.5 | in Wackadoo's | 0 | |
| Thwing East | 2 | Ballroom | Special Events | |
| Thwing East | 2 | left corner of 1914 Lounge | Special Events | |
| Thwing East | 3 | left corner of media center | Special Events | |
| Thwing East | 3 | left corner of womens center | Small Bins | |
| Thwing East | b | adjacent to observer office | 4 | 2T, 2C |
| Thwing East | b | Adjacent to vending machines | 2 | PW,T |

Legend

C



FT

MM



energyconservation@case.edu
recycling@case.edu
216-368-2580
216-368-4330



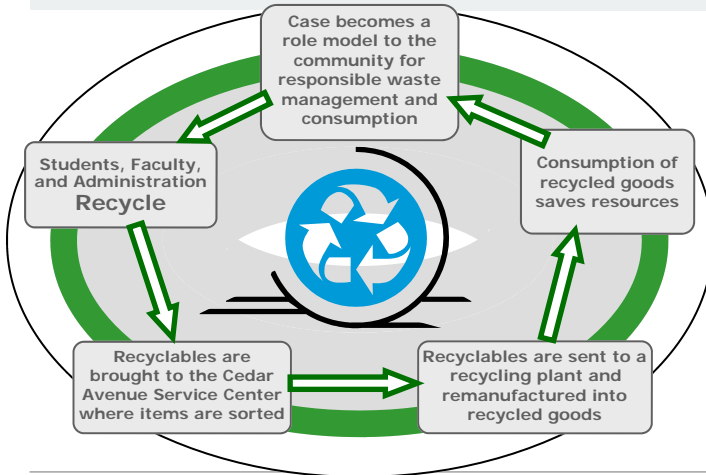
CASE

CASE WESTERN RESERVE UNIVERSITY

ADOPT A BUILDING PROGRAM

THWING CENTER

HOW DOES RECYCLING WORK AT CASE?



- ◆ Pure White Paper
 - Only White Paper, no Envelopes
- ◆ Mixed Fiber
 - Colored Paper
 - All Envelopes
 - Newspaper
 - Magazines and Catalogs
 - Phonebooks
 - Brown Paper Bags
- ◆ Plastic, Aluminum, and Glass
 - Plastics Labeled 1, 2, 3, & 5
 - Plastic Bottles (No Liquid, Remove Caps)
 - Glass Bottles (No Liquid, Remove Caps)
 - Aluminum Cans, foil, steel, bi-metal (No Liquid)
- ◆ Cardboard
 - Corrugated Cardboard. (Identified by the wavy inner layer)
 - Chipboard (cereal boxes, centers of paper towel rolls, etc.)
 - Colored file folders
 - Brown mailing envelopes
 - Brown copier paper wrapper
- ◆ Other
 - Paint, Florescent bulbs, Tires, Telephones, Other Electronics
 - Ink cartridges, Clothing, Soft or Hardcover Books, Styro-foam, Other



energyconservation@case.edu

ENERGY CONSERVATION MEASURES

An **Energy Conservation Measure (ECM)** is an effort that reduces consumption, or efficiently makes use of any purchased utility or natural resource.

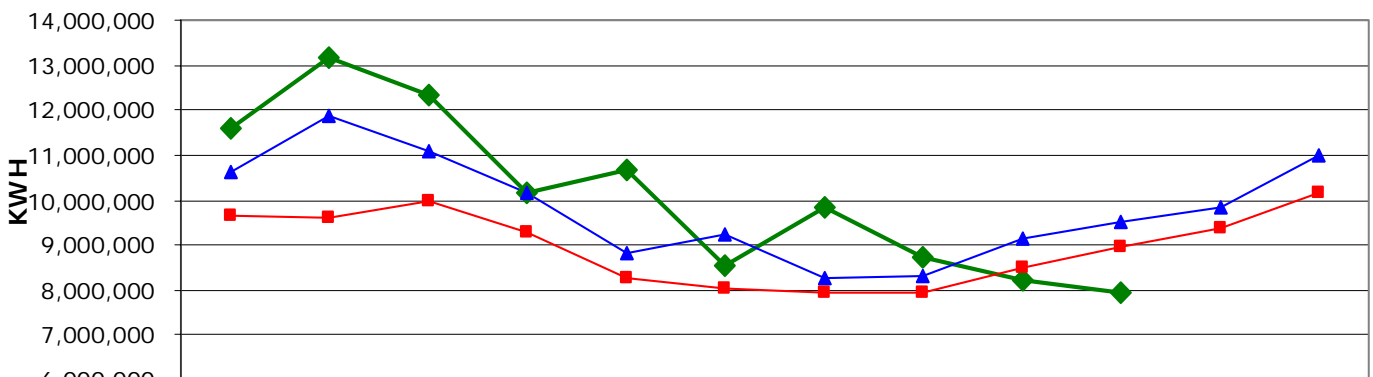
Thwing Features

- **Daylight Sensors** in the atrium and the book store
- **Computer Controls** in all areas

If you have any comments questions, suggestions of concerns please direct them to: energyconservation@case.edu

ENERGY USAGE

Total Campus Electricity Usage



| | July | August | September | October | November | December | January | February | March | April | May | June |
|-----------------|------------|------------|------------|------------|------------|-----------|-----------|-----------|-----------|-----------|-----------|------------|
| ◆ 2005-2006 | 11,595,928 | 13,183,658 | 12,352,408 | 10,141,488 | 10,662,745 | 8,564,418 | 9,821,229 | 8,751,183 | 8,201,636 | 7,952,621 | | |
| ▲ 2004-2005 | 10,634,096 | 11,852,028 | 11,107,734 | 10,167,865 | 8,841,785 | 9,249,327 | 8,249,108 | 8,306,855 | 9,121,951 | 9,492,281 | 9,833,904 | 11,016,497 |
| ■ 4 Yr. Average | 9,645,756 | 9,593,276 | 9,986,971 | 9,273,042 | 8,275,713 | 8,022,681 | 7,945,513 | 7,961,636 | 8,502,162 | 8,942,713 | 9,372,620 | 10,152,960 |