



CASE

CASE WESTERN RESERVE UNIVERSITY

ADOPT A BUILDING PROGRAM

OLIN BUILDING

- Built in 1972

Building Representative
e-mail:
phone:

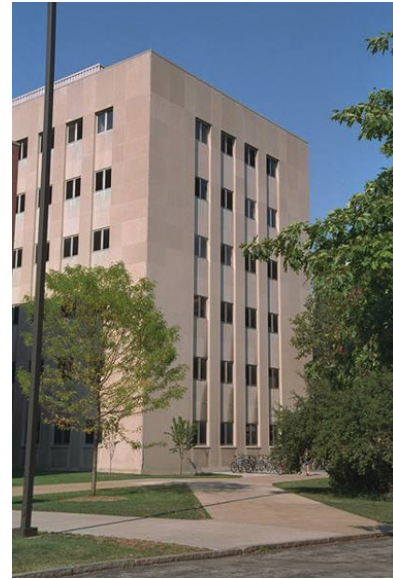
Building Representative
e-mail:
phone:

Student Representative
e-mail:
phone:

Custodial Representative
e-mail:
phone:

OLIN BUILDING

Built in 1972, Olin houses two departments and contains an electron microscope facility.



Olin Building from Quad

10900 Euclid Avenue
Cleveland, OH
44106



RECYCLING INFRASTRUCTURE

Building	Floor	Location	Total	Type
Olin	3	By v-machines in entry	3	C, 2T
Olin	4	Mail room and lounge 411	4	PGA, PW, 2T
Olin	5	Copy room	2	2T
Olin	6	In hallway next to 611	0	
Olin	7	In hallway next to 709	3	PGA, PW, MF
Olin	8	In lounge 805	4	PGA, PW, MF, T

Legend

C



FT

PGA, PW, MF



energyconservation@case.edu
recycling@case.edu
216-368-2580
216-368-4330



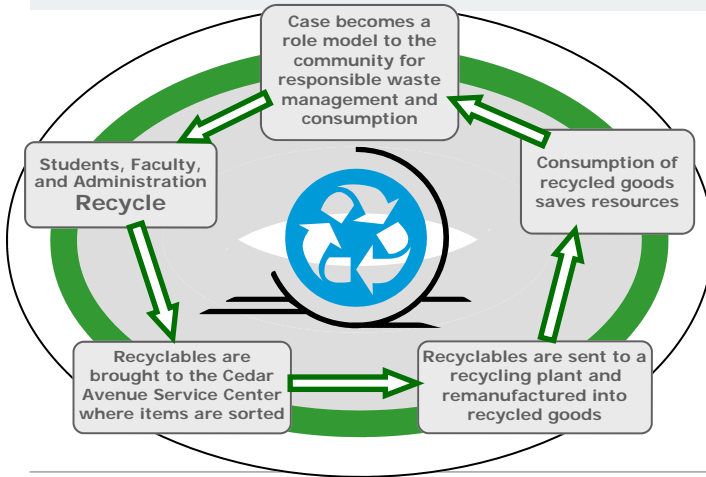
CASE

CASE WESTERN RESERVE UNIVERSITY

ADOPT A BUILDING PROGRAM

OLIN BUILDING

HOW DOES RECYCLING WORK AT CASE?



- ◆ Pure White Paper
 - Only White Paper, no Envelopes
- ◆ Mixed Fiber
 - Colored Paper
 - All Envelopes
 - Newspaper
 - Magazines and Catalogs
 - Phonebooks
 - Brown Paper Bags
- ◆ Plastic, Aluminum, and Glass
 - Plastics Labeled 1, 2, 3, & 5
 - Plastic Bottles (No Liquid, Remove Caps)
 - Glass Bottles (No Liquid, Remove Caps)
 - Aluminum Cans, foil, steel, bi-metal (No Liquid)
- ◆ Cardboard
 - Corrugated Cardboard. (Identified by the wavy inner layer)
 - Chipboard (cereal boxes, centers of paper towel rolls, etc.)
 - Colored file folders
 - Brown mailing envelopes
 - Brown copier paper wrapper
- ◆ Other
 - Paint, Florescent bulbs, Tires, Telephones, Other Electronics
 - Ink cartridges, Clothing, Soft or Hardcover Books, Styro-foam, Other



energyconservation@case.edu

ENERGY CONSERVATION MEASURES

An **Energy Conservation Measure (ECM)** is an effort that reduces consumption, or efficiently makes use of any purchased utility or natural resource.

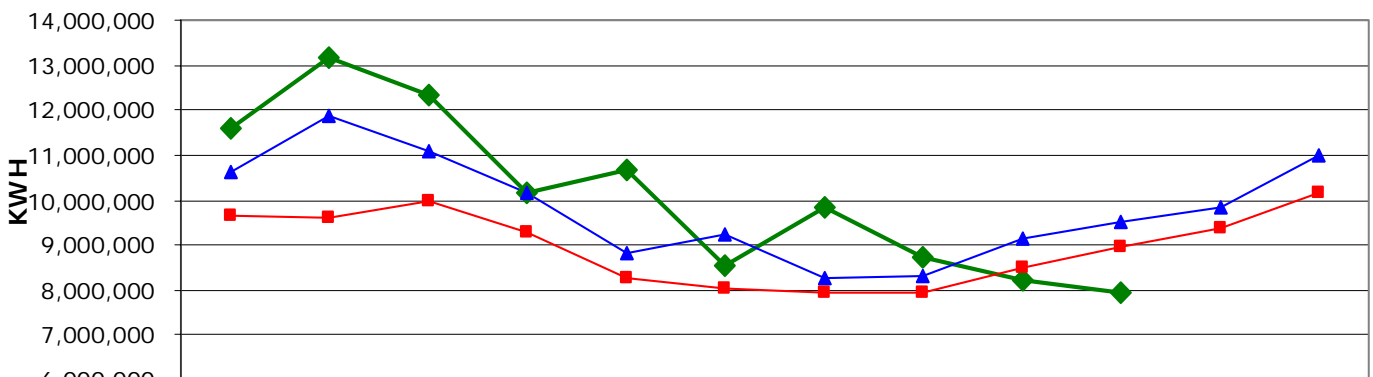
Olin Features

- **More Efficient Use if Heating in stair-well**
- **Lighting put on Energy Saving System**

If you have any comments questions, suggestions of concerns please direct them to: energyconservation@case.edu

ENERGY USAGE

Total Campus Electricity Usage



	July	August	September	October	November	December	January	February	March	April	May	June
◆ 2005-2006	11,595,928	13,183,658	12,352,408	10,141,488	10,662,745	8,564,418	9,821,229	8,751,183	8,201,636	7,952,621		
▲ 2004-2005	10,634,096	11,852,028	11,107,734	10,167,865	8,841,785	9,249,327	8,249,108	8,306,855	9,121,951	9,492,281	9,833,904	11,016,497
■ 4 Yr. Average	9,645,756	9,593,276	9,986,971	9,273,042	8,275,713	8,022,681	7,945,513	7,961,636	8,502,162	8,942,713	9,372,620	10,152,960