



CASE

CASE WESTERN RESERVE UNIVERSITY

ADOPT A BUILDING PROGRAM

NORD HALL

- Built in 1988

Building Representative
e-mail:
phone:

Building Representative
e-mail:
phone:

Student Representative
e-mail:
phone:

Custodial Representative
e-mail:
phone:

10900 Euclid Avenue
Cleveland, OH
44106

NORD HALL

Built in 1988, Nord Hall (formerly Enterprise Hall) is home to the dean's offices of the Case School of Engineering and the School of Graduate Studies, The Institute for the Integration of Management and Engineering (TIIME), and the University's Corporate and Government Relations departments. It features a spacious rotunda, Einstein Brothers' Bagels and the School of Engineering Computer Lab.



Nord Hall from the Quad



RECYCLING INFRASTRUCTURE

Building	Floor	Location	Total	Type
Nord	1	nothing	0	
Nord	2	nothing	0	
Nord	3	Next to Einstein Brothers'	10	PGA, 2 PW, C, 6T
Nord	4	Computer lab	6	2M, 5T, PW
Nord	5	Mail room	5	PGA, PW, MF, 2T
Nord	6	By Office of Graduate Studies	3	MM, PW, T
Nord	6	File room	1	Small Bin
Nord	6	Hall connecting Nord and Sears	0	
Nord	6	Mailroom	1	T

Legend

MM



C

PGA, PW, MF



FT

energyconservation@case.edu
recycling@case.edu
216-368-2580
216-368-4330



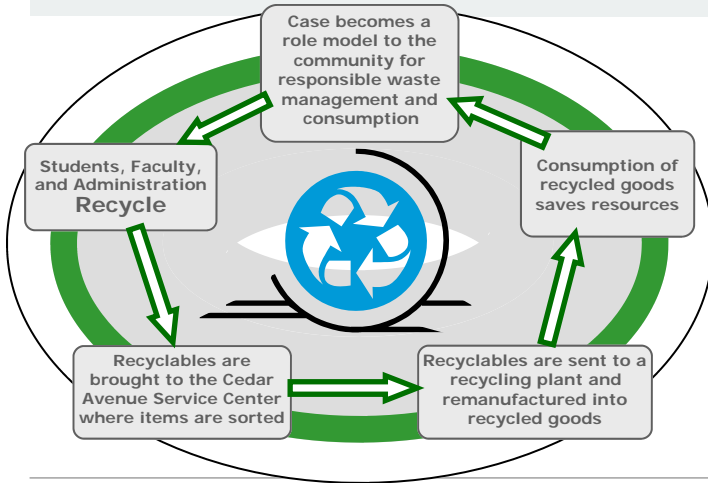
CASE

CASE WESTERN RESERVE UNIVERSITY

ADOPT A BUILDING PROGRAM

NORD HALL

HOW DOES RECYCLING WORK AT CASE?



- ◆ Pure White Paper
 - Only White Paper, no Envelopes
- ◆ Mixed Fiber
 - Colored Paper
 - All Envelopes
 - Newspaper
 - Magazines and Catalogs
 - Phonebooks
 - Brown Paper Bags
- ◆ Plastic, Aluminum, and Glass
 - Plastics Labeled 1, 2, 3, & 5
 - Plastic Bottles (No Liquid, Remove Caps)
 - Glass Bottles (No Liquid, Remove Caps)
 - Aluminum Cans, foil, steel, bi-metal (No Liquid)
- ◆ Cardboard
 - Corrugated Cardboard. (Identified by the wavy inner layer)
 - Chipboard (cereal boxes, centers of paper towel rolls, etc.)
 - Colored file folders
 - Brown mailing envelopes
 - Brown copier paper wrapper
- ◆ Other
 - Paint, Florescent bulbs, Tires, Telephones, Other Electronics
 - Ink cartridges, Clothing, Soft or Hardcover Books, Styro-foam, Other



energyconservation@case.edu

ENERGY CONSERVATION MEASURES

An **Energy Conservation Measure (ECM)** is an effort that reduces consumption, or efficiently makes use of any purchased utility or natural resource.

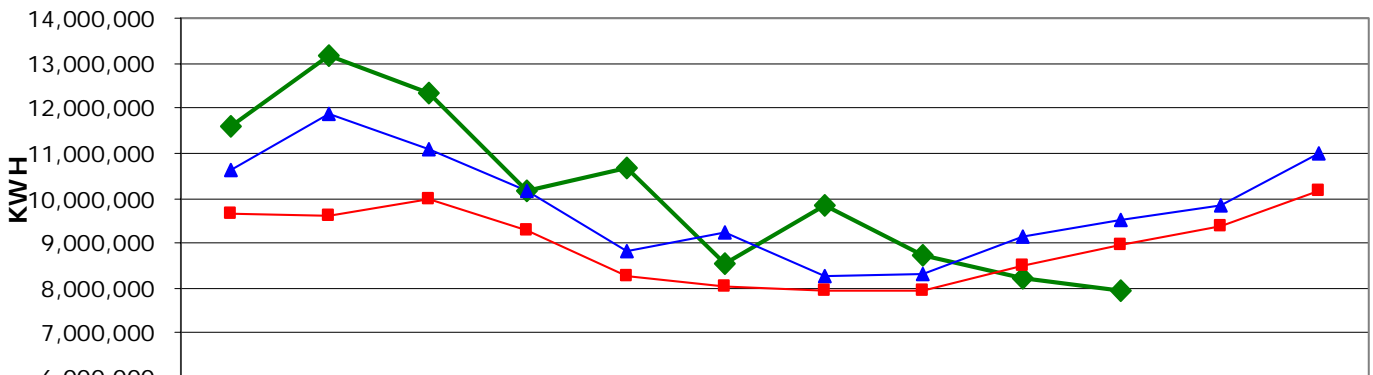
Nord Features

- **Motion Sensors** on all corridor lighting
- **Reheat and Perimeter Sensors** that shut-down at higher temperatures

If you have any comments questions, suggestions of concerns please direct them to: energyconservation@case.edu

ENERGY USAGE

Total Campus Electricity Usage



	July	August	September	October	November	December	January	February	March	April	May	June
◆ 2005-2006	11,595,928	13,183,658	12,352,408	10,141,488	10,662,745	8,564,418	9,821,229	8,751,183	8,201,636	7,952,621		
▲ 2004-2005	10,634,096	11,852,028	11,107,734	10,167,865	8,841,785	9,249,327	8,249,108	8,306,855	9,121,951	9,492,281	9,833,904	11,016,497
■ 4 Yr. Average	9,645,756	9,593,276	9,986,971	9,273,042	8,275,713	8,022,681	7,945,513	7,961,636	8,502,162	8,942,713	9,372,620	10,152,960