



# CASE

CASE WESTERN RESERVE UNIVERSITY

## ADOPT A BUILDING PROGRAM

## MANDEL SCHOOL OF APPLIED SOCIAL SCIENCES

Building Representative  
e-mail:  
phone:

Building Representative  
e-mail:  
phone:

Student Representative  
e-mail:  
phone:

Custodial Representa-  
tive  
e-mail:  
phone:

# MANDEL SCHOOL OF APPLIED SOCIAL SCIENCES

The Madnel School of Applied Social Sciences (MSASS) offers graduate work in the area of social work and is consistently ranked as one of the top ten schools of social work in the country. Consistently ranked as one of the top schools of social work in the country, the Mandel School offers an innovative combination of extensive field education with the enduring traditions and prestige of a major university.



MSASS from Bellflower

11235 Bellflower Road  
Cleveland, OH  
44106



## RECYCLING INFRASTRUCTURE

Building	Floor	Location	Total	Type
MSASS	1	by stairs	1	MM
MSASS	1	student lounge	3	3T, MM
MSASS	2	by stairs	1	MM
MSASS	3	behind stairs by room 320	2	MM,T

Legend

MM



FT



energyconservation@case.edu  
recycling@case.edu  
216-368-2580  
216-368-4330



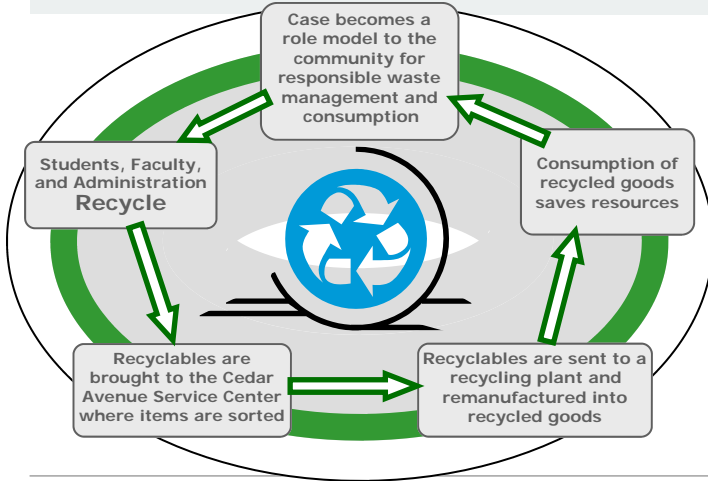
# CASE

CASE WESTERN RESERVE UNIVERSITY

## ADOPT A BUILDING PROGRAM

## MANDEL SCHOOL OF APPLIED SOCIAL SCIENCES

### HOW DOES RECYCLING WORK AT CASE?



- ◆ Pure White Paper
  - Only White Paper, no Envelopes
- ◆ Mixed Fiber
  - Colored Paper
  - All Envelopes
  - Newspaper
  - Magazines and Catalogs
  - Phonebooks
  - Brown Paper Bags
- ◆ Plastic, Aluminum, and Glass
  - Plastics Labeled 1, 2, 3, & 5
  - Plastic Bottles (No Liquid, Remove Caps)
  - Glass Bottles (No Liquid, Remove Caps)
  - Aluminum Cans, foil, steel, bi-metal (No Liquid)
- ◆ Cardboard
  - Corrugated Cardboard. (Identified by the wavy inner layer)
  - Chipboard (cereal boxes, centers of paper towel rolls, etc.)
  - Colored file folders
  - Brown mailing envelopes
  - Brown copier paper wrapper
- ◆ Other
  - Paint, Florescent bulbs, Tires, Telephones, Other Electronics
  - Ink cartridges, Clothing, Soft or Hardcover Books, Styro-foam, Other



energyconservation@case.edu

### ENERGY CONSERVATION MEASURES

An **Energy Conservation Measure (ECM)** is an effort that reduces consumption, or efficiently makes use of any purchased utility or natural resource.

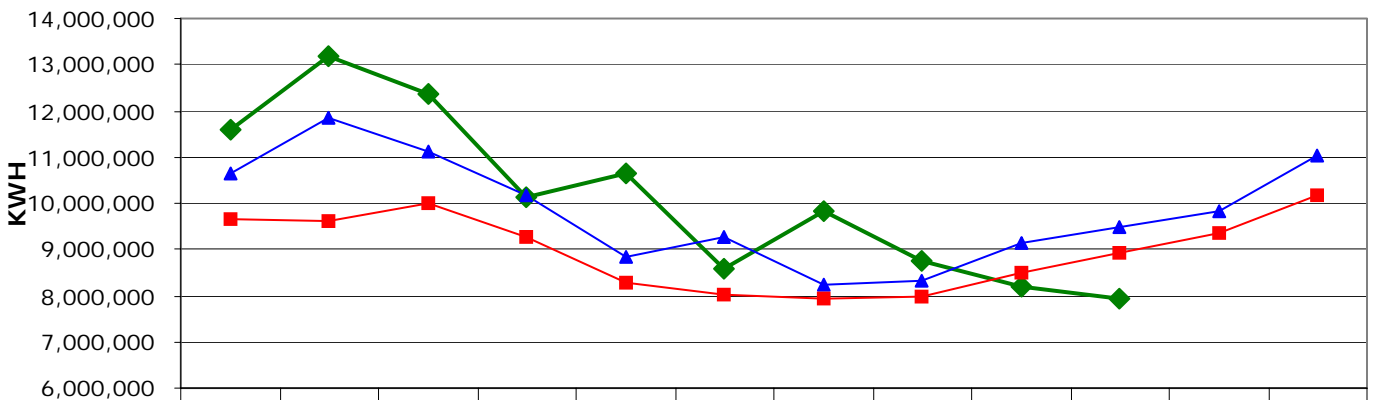
#### MSASS Features

- **Low Emissions Film** on windows
- **Reheat and Perimeter Sensors** that shut-down at higher temperatures

If you have any comments questions, suggestions of concerns please direct them to: [energyconservation@case.edu](mailto:energyconservation@case.edu)

### ENERGY USAGE

Total Campus Electricity Usage



	July	August	September	October	November	December	January	February	March	April	May	June
◆ 2005-2006	11,595,928	13,183,658	12,352,408	10,141,488	10,662,745	8,564,418	9,821,229	8,751,183	8,201,636	7,952,621		
▲ 2004-2005	10,634,096	11,852,028	11,107,734	10,167,865	8,841,785	9,249,327	8,249,108	8,306,855	9,121,951	9,492,281	9,833,904	11,016,497
■ 4 Yr. Average	9,645,756	9,593,276	9,986,971	9,273,042	8,275,713	8,022,681	7,945,513	7,961,636	8,502,162	8,942,713	9,372,620	10,152,960