



CASE

CASE WESTERN RESERVE UNIVERSITY

ADOPT A BUILDING PROGRAM

MATHER MEMORIAL

Building Representative
e-mail:
phone:

Building Representative
e-mail:
phone:

Student Representative
e-mail:
phone:

Custodial Representative
e-mail:
phone:

MATHER MEMORIAL

Mather Memorial Building houses the offices and classrooms of the Anthropology, Psychology and Sociology departments. It once housed the administrative offices and classrooms of Flora Stone Mather College. The court was used for outdoor events, such as the annual May Day celebrations, which included the crowning of a queen, a may-pole dance, and skits. Mather Memorial was given by Samuel Mather and his family in memory of Flora Stone and was designed by Charles Schweinfurth. Cleveland architect Charles W. Hopkins, who planned many public schools, designed the addition built in 1930. The inscription on the frieze is Proverbs 31:10.



Mather Memorial from Mayfield

11220 Bellflower Road
Cleveland, OH
44106



RECYCLING INFRASTRUCTURE

Building	Floor	Location	Total	Type
Mather Memorial	1	in hallway across from room 123	3	PGA, PW, MF
Mather Memorial	1	next to drinking fountain outside room 137	4	PGA, PW, MF, T
Mather Memorial	2	in hallway near room 221A by stairs	3	PGA, PW, MF
Mather Memorial	2	in hallway next to main office by stairs	4	PGA, PW, MF, T
Mather Memorial	b	none-no traffic	0	

Legend



PGA, MW, MF



FT

energyconservation@case.edu
recycling@case.edu
216-368-2580
216-368-4330



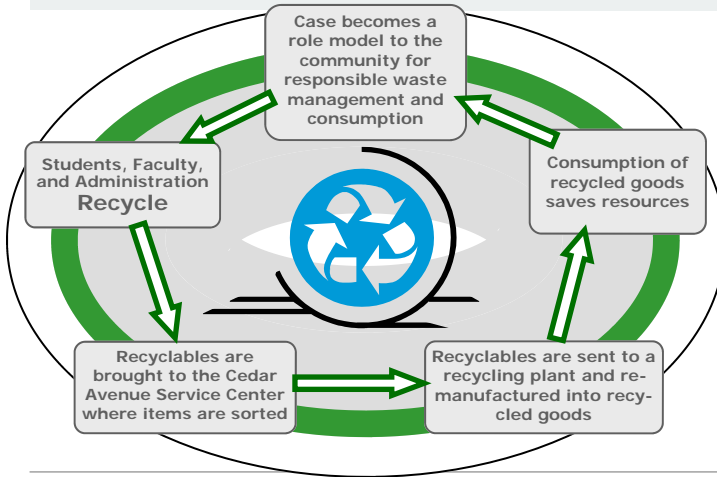
CASE

CASE WESTERN RESERVE UNIVERSITY

ADOPT A BUILDING PROGRAM

MATHER MEMORIAL

HOW DOES RECYCLING WORK AT CASE?



- ◆ Pure White Paper
 - Only White Paper, no Envelopes
- ◆ Mixed Fiber
 - Colored Paper
 - All Envelopes
 - Newspaper
 - Magazines and Catalogs
 - Phonebooks
 - Brown Paper Bags
- ◆ Plastic, Aluminum, and Glass
 - Plastics Labeled 1, 2, 3, & 5
 - Plastic Bottles (No Liquid, Remove Caps)
 - Glass Bottles (No Liquid, Remove Caps)
 - Aluminum Cans, foil, steel, bi-metal (No Liquid)
- ◆ Cardboard
 - Corrugated Cardboard. (Identified by the wavy inner layer)
 - Chipboard (cereal boxes, centers of paper towel rolls, etc.)
 - Colored file folders
 - Brown mailing envelopes
 - Brown copier paper wrapper
- ◆ Other
 - Paint, Florescent bulbs, Tires, Telephones, Other Electronics
 - Ink cartridges, Clothing, Soft or Hardcover Books, Styrofoam, Other



energyconservation@case.edu

ENERGY CONSERVATION MEASURES

An **Energy Conservation Measure (ECM)** is an effort that reduces consumption, or efficiently makes use of any purchased utility or natural resource.

- Mather Memorial Features
- **Motion Sensors** on corridor lighting
 - **Reheat and Perimeter Sensors** that shut-down at higher temperatures

If you have any comments questions, suggestions of concerns please direct them to: energyconservation@case.edu

ENERGY USAGE

Total Campus Electricity Usage

