



# CASE

CASE WESTERN RESERVE UNIVERSITY

## ADOPT A BUILDING PROGRAM

### MATHER HOUSE

• Built in  
Building Representative  
e-mail:  
phone:

Building Representative  
e-mail:  
phone:

Student Representative  
e-mail:  
phone:

Custodial Representative  
e-mail:  
phone:

# MATHER HOUSE

Mather House is used for classrooms and offices by the departments of History, Art History & Art, Classics, Religion, and Political Science. It was designed as a dormitory by Abram Garfield, son of President James A. Garfield. Mather House was built by the Alumnae Association of the College for Women as a memorial to Flora Stone Mather and in celebration of the 25th anniversary of that college. The building served as a dormitory for more than 40 years and became the first coeducational dormitory at the University.



Mather House from Mather Quad

11201 Euclid Avenue  
Cleveland, OH  
44106



## RECYCLING INFRASTRUCTURE

Building	Floor	Location	Total	Type
Mather	1	kitchen	4	PGA, PW, MF, T
Mather	1	mailroom	2	T, C
Mather	2	in hallway by room 213	3	PGA, PW, MF
Mather	3	next to ladies room	3	PGA, PW, MF

**Legend**

	PGA, PW, MF
	C
	FT

energyconservation@case.edu  
recycling@case.edu  
216-368-2580  
216-368-4330



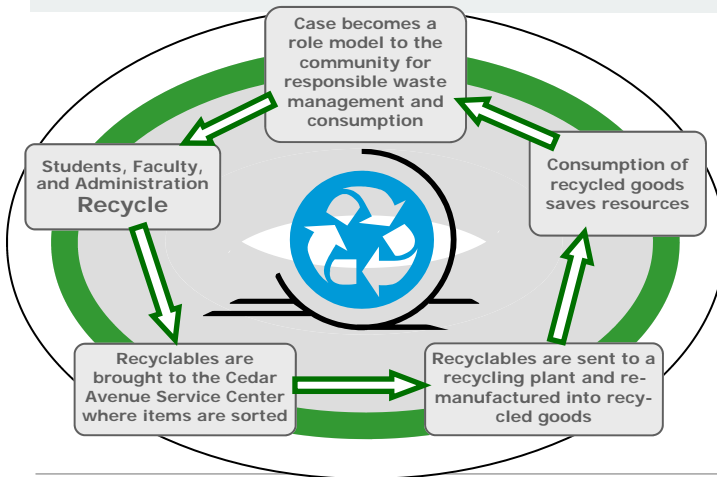
# CASE

CASE WESTERN RESERVE UNIVERSITY

## ADOPT A BUILDING PROGRAM

### MATHER HOUSE

## HOW DOES RECYCLING WORK AT CASE?



- ◆ Pure White Paper
  - Only White Paper, no Envelopes
- ◆ Mixed Fiber
  - Colored Paper
  - All Envelopes
  - Newspaper
  - Magazines and Catalogs
  - Phonebooks
  - Brown Paper Bags
- ◆ Plastic, Aluminum, and Glass
  - Plastics Labeled 1, 2, 3, & 5
  - Plastic Bottles (No Liquid, Remove Caps)
  - Glass Bottles (No Liquid, Remove Caps)
  - Aluminum Cans, foil, steel, bi-metal (No Liquid)
- ◆ Cardboard
  - Corrugated Cardboard. (Identified by the wavy inner layer)
  - Chipboard (cereal boxes, centers of paper towel rolls, etc.)
  - Colored file folders
  - Brown mailing envelopes
  - Brown copier paper wrapper
- ◆ Other
  - Paint, Florescent bulbs, Tires, Telephones, Other Electronics
  - Ink cartridges, Clothing, Soft or Hardcover Books, Styrofoam, Other



energyconservation@case.edu

## ENERGY CONSERVATION MEASURES

An **Energy Conservation Measure (ECM)** is an effort that reduces consumption, or efficiently makes use of any purchased utility or natural resource.

Mather House Features

- **Motion Sensors** in offices
- **Reheat and Perimeter Sensors** that shut-down at higher temperatures

If you have any comments questions, suggestions of concerns please direct them to: [energyconservation@case.edu](mailto:energyconservation@case.edu)

## ENERGY USAGE

Mather House Electricity Usage

