



# CASE

CASE WESTERN RESERVE UNIVERSITY

## ADOPT A BUILDING PROGRAM

### AW SMITH BUILDING

- Built in 1939

Building Representative  
e-mail:  
phone:

Building Representative  
e-mail:  
phone:

Student Representative  
e-mail:  
phone:

Custodial Representative  
e-mail:  
phone:

# AW SMITH BUILDING

Built in 1939, A. W. Smith houses the Geology, Chemical Engineering, and Astronomy Departments. A. W. Smith also contains the campus' main computer lab and an observatory available for student use.



AW Smith from Quad

2128 Adelbert Road  
Cleveland, OH  
44106



## INFRASTRUCTURE INVENTORY

Building	Floor	Location	Total	Type
AW Smith	1	By room 114	3	PGA, PW, MF
AW Smith	2	By ramp	2	T, C
AW Smith	3	Main hallway	0	

Legend

C 

FT 

PGA, PW, MF 



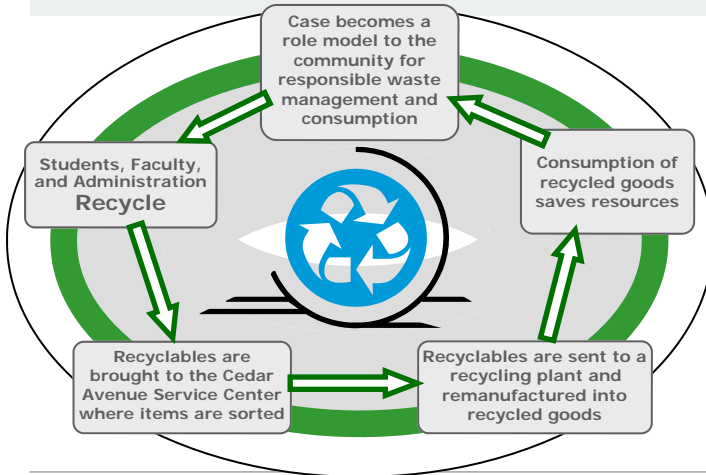
# CASE

CASE WESTERN RESERVE UNIVERSITY

## ADOPT A BUILDING PROGRAM

### AW SMITH BUILDING

## HOW DOES RECYCLING WORK AT CASE?



- ◆ Pure White Paper
  - Only White Paper, no Envelopes
- ◆ Mixed Fiber
  - Colored Paper
  - All Envelopes
  - Newspaper
  - Magazines and Catalogs
  - Phonebooks
  - Brown Paper Bags
- ◆ Plastic, Aluminum, and Glass
  - Plastics Labeled 1, 2, 3, & 5
  - Plastic Bottles (No Liquid, Remove Caps)
  - Glass Bottles (No Liquid, Remove Caps)
- ◆ Aluminum Cans, foil, steel, bi-metal (No Liquid)
- ◆ Cardboard
  - Corrugated Cardboard. (Identified by the wavy inner layer)
  - Chipboard (cereal boxes, centers of paper towel rolls, etc.)
  - Colored file folders
  - Brown mailing envelopes
  - Brown copier paper wrapper
- ◆ Other
  - Paint, Florescent bulbs, Tires, Telephones, Other Electronics
  - Ink cartridges, Clothing, Soft or Hardcover Books, Styrofoam, Other



energyconservation@case.edu

## ENERGY CONSERVATION MEASURES

An **Energy Conservation Measure (ECM)** is an effort that reduces consumption, or efficiently makes use of any purchased utility or natural resource.

- AW Smith Features
- **New Insulation** for select pipes
  - **Motion Sensors** in public areas
  - **Retrofitted Lights** throughout building

If you have any comments questions, suggestions of concerns please direct them to: [energyconservation@case.edu](mailto:energyconservation@case.edu)

## ENERGY USAGE

Total Campus Electricity Usage

