

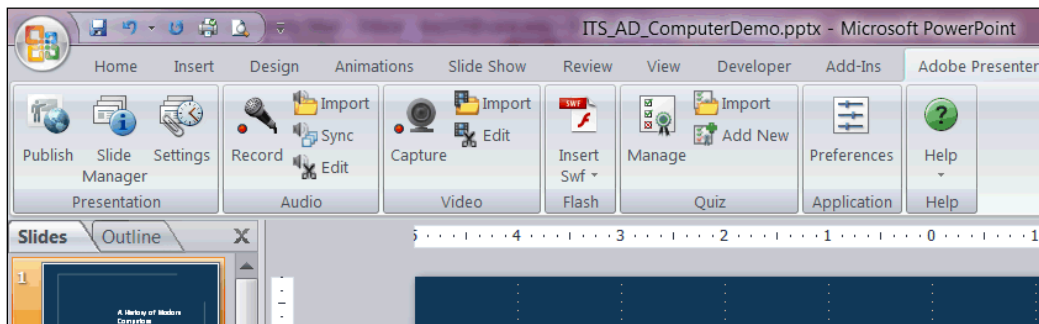
Importing Video


Concept

Adobe Presenter has two options for importing video files into a presentation. This functionality enables instructors to add rich media from sources such as textbook companies and online distributors into their presentations that use Adobe Presenter. This topic will explain how to import Windows Media, QuickTime, Flash, and Shockwave video into a presentation.

Procedure

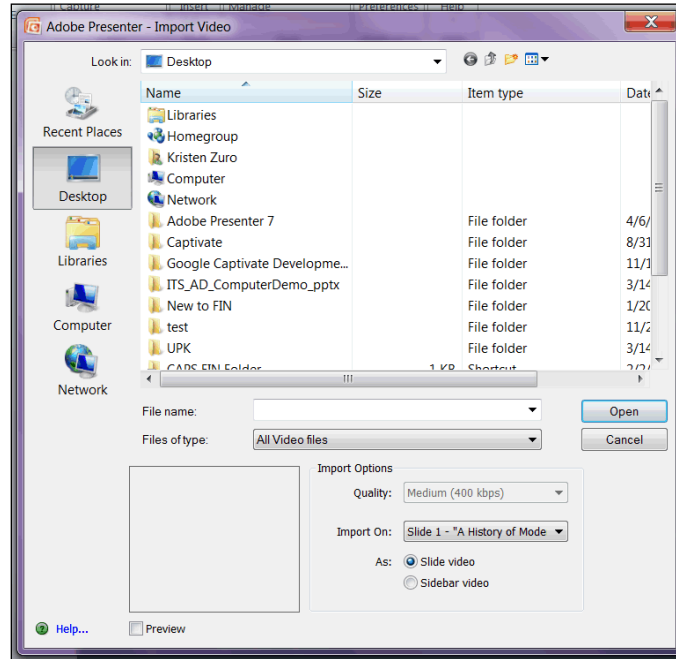
Begin by opening a PowerPoint presentation.



Step	Action
1.	Activate the Adobe Presenter tab. In the Video box of the Presenter tab, click the Import button. 

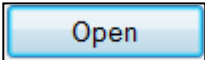
Information Technology Services Reference Guide

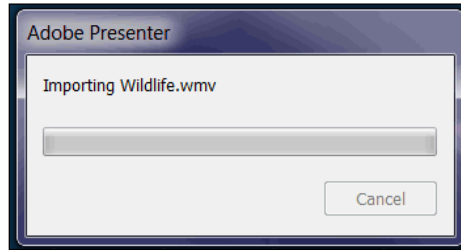
Importing Video



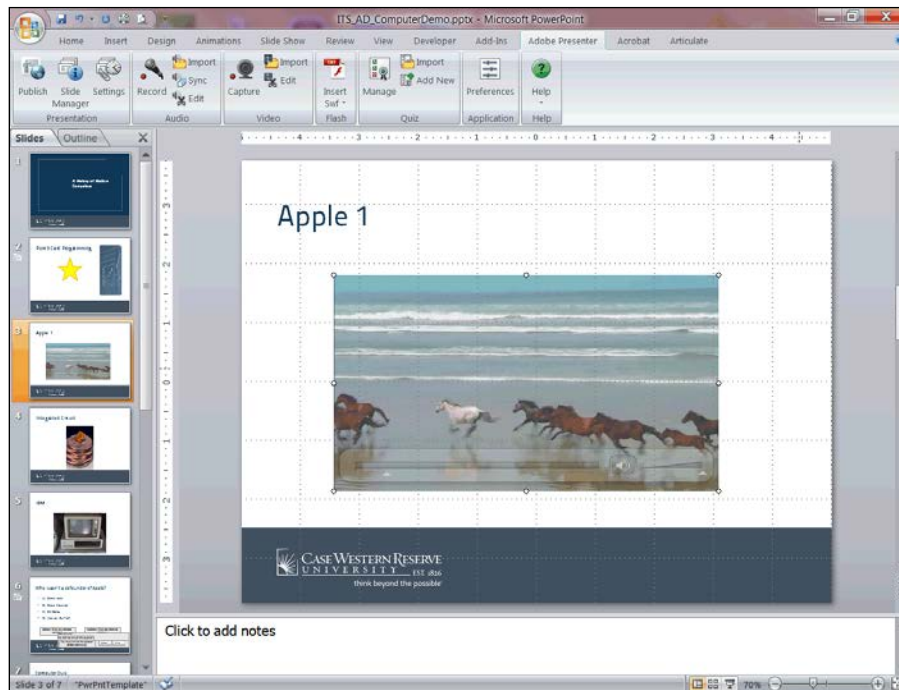
Step	Action
2.	<p>A window appears for you to locate and select the file(s) to import.</p> <p>By default, the application will search for files that end in video formats. Click the Files of type: list to see the video formats that can be imported into PowerPoint using Presenter.</p>

File types that are compatible with Presenter include Windows Media, QuickTime, and Flash files using ActionScript 2.

Step	Action
3.	<p>The file search window presents you with two options for importing video files. The Import On: dropdown field allows you to select the slide onto which the video will be placed. Beneath that field, you are given the option to import the video onto the slide itself or into a sidebar that appears next to the slide once Presenter publishes the presentation.</p>
4.	<p>After you have located and selected your video file(s) and selected the slide location and format, click the Open button.</p> <div style="text-align: center; margin-top: 10px;">  </div>



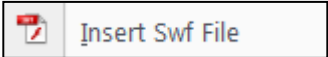
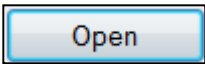

Step	Action
5.	A window appears that displays the progress of the importing process. When it disappears, the video is imported.
6.	When the video has imported, it can be viewed on the slide where it was placed (unless it was imported to the sidebar, which cannot be seen until the presentation is previewed or published).



Step	Action
7.	If on a slide, the video can be resized to fit the slide by pressing the [Shift] key on your keyboard and clicking and dragging the corner points of the video until it has reached the desired size.
8.	The process to insert a Shockwave video file to your presentation is different than the import process. Click the Insert Swf dropdown button. <div style="border: 1px solid black; padding: 5px; display: inline-block; margin-top: 10px;"> Insert Swf ▾ </div>

Information Technology Services Reference Guide

Importing Video

Step	Action
9.	Click the Insert Swf File list item. 
10.	The Insert Flash (swf) window appears. At the bottom of the window, you are given the option to select the slide onto which the video will be imported. You are also given the option to import the video onto the slide itself or into a sidebar area that will appear next to the presentation after it's published. Locate and select your .swf file, then click the Open button. 
11.	Should you need to edit the .swf file, click the Insert Swf dropdown button and select Manage Swf from the list. 
12.	This completes the process of importing video into a presentation using Adobe Presenter. End of Procedure.